



2004-2008 Ford Econoline (Ambulance)

This guide will show the proper way to install a Dual-Vision XC4 Camera in a 2004-2008 Ford Econoline. Please review the Service Bulletins for grounding and making connections prior to installing. In this guide you will find dash removal, wire locations, & mounting locations.

THIS GUIDE WILL WORK WITH DIESEL & STANDARD VEHICLES

After testing and verifying power wires, disconnect the negative battery terminal to prevent any accidental shorts or blown fuses

Verify no vehicle service lights are on prior to installation. Contact a Fleet Manager immediately if the vehicle has any damage

UPDATED October 15th, 2018

*****NEW PART*****

*****Harness DV457 is needed if trigger wires are being connected*****

For Technical Support please contact our support team at:

Techsupport@Roscovision.com



Gray – Installation Warning

Red – Urgent Warning

Blue – Extra Installation Parts Needed

Purple – New Installation



Version 5.10.2

Proprietary and Confidential

2004-2008 Ford Econoline



2004-2008 Ford Econoline (Ambulance)

Before starting your install, its best to prep the windshield for recorder mounting

Giving the VHB tape time to cure before mounting the Recorder will give you a permanent bond and prevent recorders from falling.

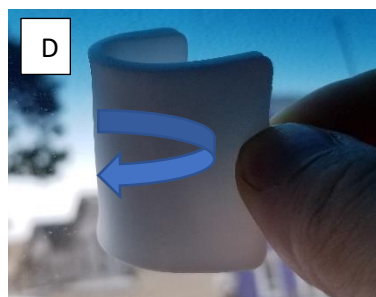


- A- Squeeze to release primer and apply to the windshield
- B- Apply Primer to the bracket
- C- Wait for the primer to dry leaving a dull haze on the windshield

IMPORTANT: VHB Tape should only be applied when windshield temperature is within 50°F-100°F (10°C-38°C) to allow proper curing of mounting adhesive pads.

Run the defrost on high heat or use a heat gun in colder temperatures

After windshield is the correct temperature apply the VHB tape marked **PERMANENT** by rolling the tape on the windshield (D)



Using your thumb push firmly around all edges of the VHB tape

Proceed to the next page for Step 1 of the installation



Version 5.10.2

Proprietary and Confidential

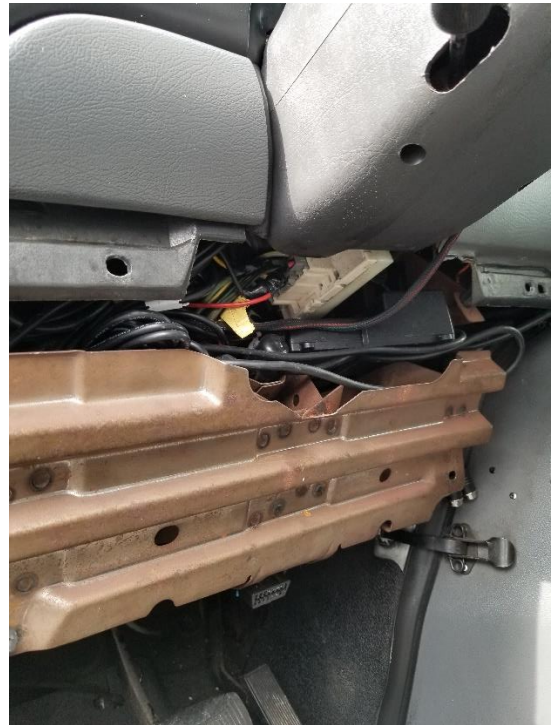
2004-2008 Ford Econoline



2004-2008 Ford Econoline (Ambulance)

Step 1 - Dash Removal:

- Starting from the top, pry the lower dash panel and pull down to remove

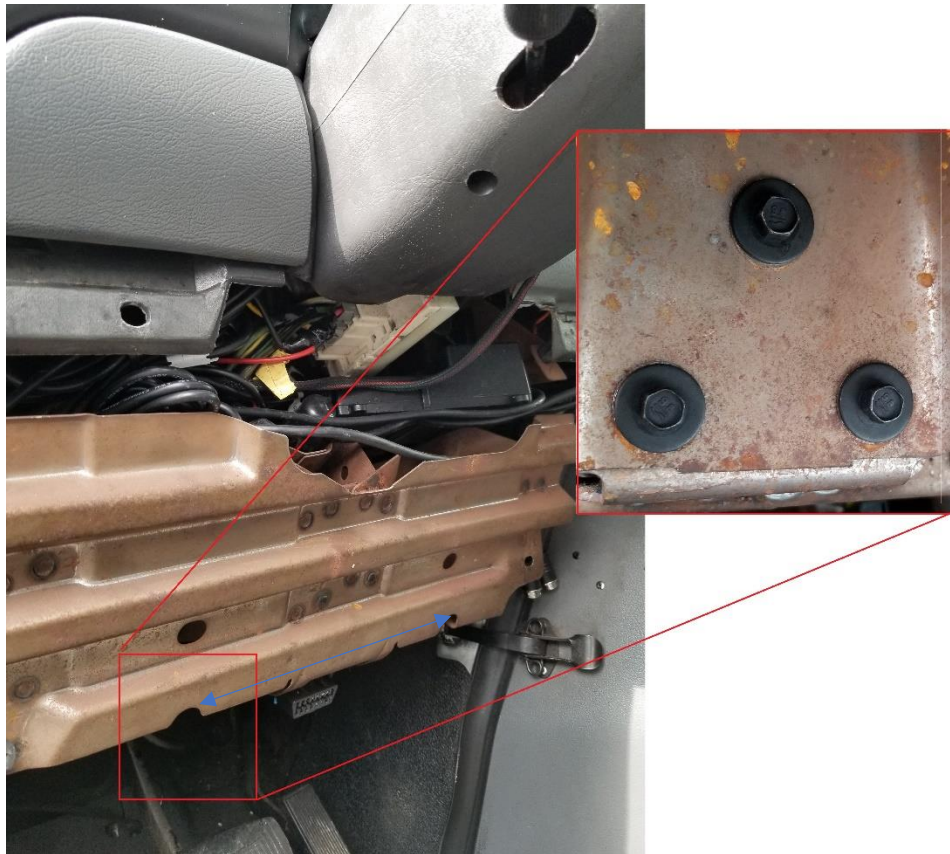




2004-2008 Ford Econoline (Ambulance)

Dash Removal Continued:

- Remove the Three 8MM bolts on both sides of the metal support brace (6 Total)
- This will give you access to power connections & mounting location.

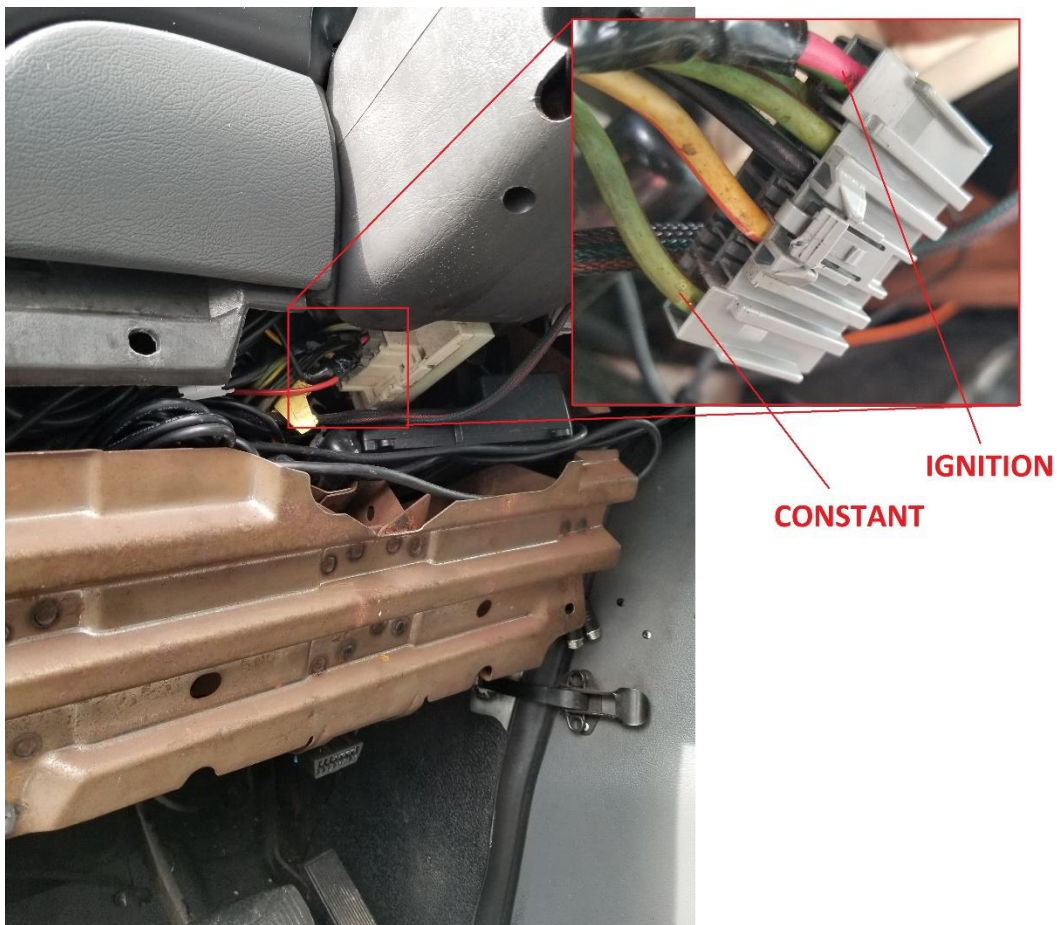




2004-2008 Ford Econoline (Ambulance)

Step 2 - Power connections:

- Locate the gray ignition plug located on the steering column
- Connect the RED **Constant** Wire to the vehicles **Light Green/Violet** wire
- Connect the YELLOW **Ignition** wire to the vehicles **Pink/Light Green** wire



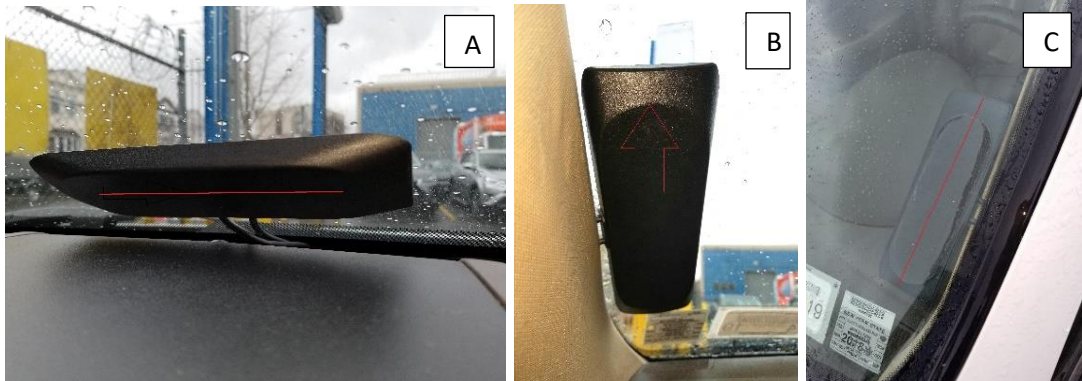


2004-2008 Ford Econoline (Ambulance)

Step 3 - Antenna Mounting:

The Manufacture recommends mounting the antenna on the windshield

Mount the antenna on the same side of the vehicle as the PDC



Notice the angled part of the antenna is on the **inside** of the vehicle (Photo A & B). Make sure the **FLAT SIDE** of the antenna has a **CLEAR VIEW OF THE SKY** and is facing **OUTSIDE** (Photo C)



After all connections are made, coil up all the extra antenna cable (Photo A)

Never bend the cable. This will cause signal loss and damage to the antenna (Photo B)

Please refer to the Antenna Installation Guideline for complete details



Version 5.10.2

Proprietary and Confidential

2004-2008 Ford Econoline



2004-2008 Ford Econoline (Ambulance)

Step 4 - PDC & Modem Connections:

- Connect the USB cable from the modem to the PDC and secure with a zip tie (Photo A)
- Connect the Antenna cable to the modem (Photo B)
- Make these connections prior to mounting the modem & PDC
- Make sure the screw on the modem cover is secured and doesn't move or bend (Photo C)



Connect the MIMO 1 antenna wire to the Modems PRI connector



Connect the MIMO 2 antenna wire to the Modems DIV connector





2004-2008 Ford Econoline (Ambulance)

Step 5 - PDC & Modem Mounting Location:

- The Modem can be attached to the factory harness on the left side of the cavity behind the dash
- Secure the modem with a zip tie





2004-2008 Ford Econoline (Ambulance)

PDC & Modem Mounting Location Continued:

- Mount the PDC in the center consol. You can access this from the right side of the lower dash.
- Secure a zip tie around the hole in the dash to prevent the PDC from falling.
- Even with the zip tie in the hole, the dash will still assemble properly without damaging the zip tie





2004-2008 Ford Econoline (Ambulance)

IT'S IMPORTANT TO NEATLY ZIP TIE WIRES TO A FACTORY BRACKET OR HARNESS TO PREVENT FROM FALLING. KEEP AWAY FROM THE STEERING FUNCTIONS AND ANY MOVING PARTS



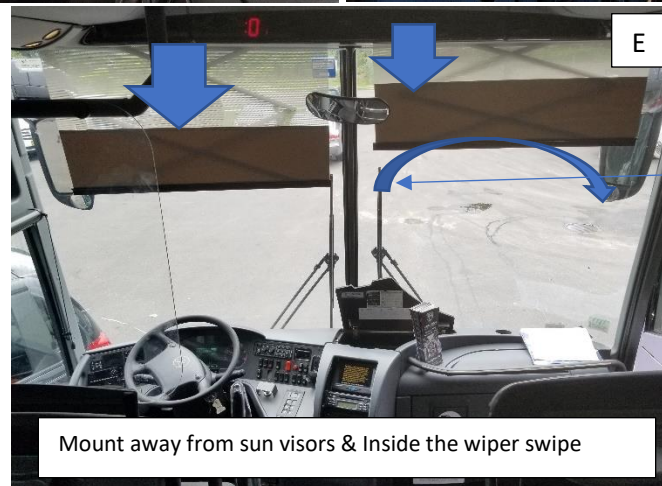
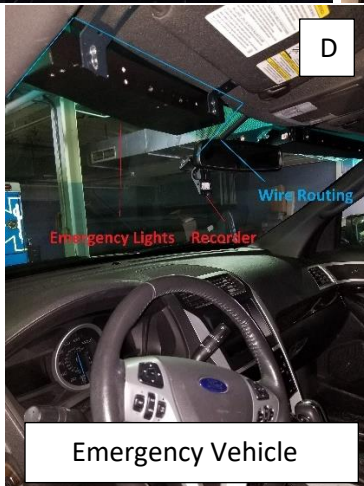
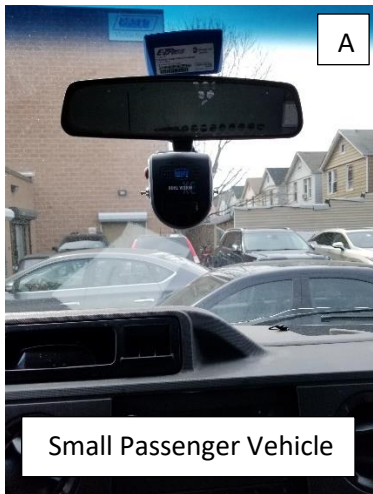
**PLEASE READ THE RECORDER MOUNTING & VHB TAPE INSTALLATION GUIDELINE BEFORE
PROCEEDING TO THE NEXT STEP**





2004-2008 Ford Econoline (Ambulance)

Step 6 - Recorder Mounting and wire Routing:



For small passenger vehicles, mount the Recorder under the rear-view mirror (Photo A).

If the vehicle has any factory sensors under the rear-view mirror, mount the Recorder to the right of the mirror, not causing a distraction to the driver (Photo B).

For larger trucks or busses (With split windows), mount the Recorder on the right panel (Photo C) and INSIDE the wiper swipe. Keeping the Recorder INSIDE the swipe will ensure rain or snow will not interfere with the video.

When working on emergency vehicles use extreme caution when routing wires around emergency lights and equipment (Photo D)

Always pull down the vehicles sun visors to make sure they don't block or interfere with the Recorder or the video (Photo E). Notice the swipe of the wiper blades. For vehicles like this, mount the Recorder under the visor, inside the swipe.



Version 5.10.2

Proprietary and Confidential

2004-2008 Ford Econoline



2004-2008 Ford Econoline (Ambulance)

To verify proper angle & correct mounting, press the driver activity button. Logon to your Rosco account and view activity to confirm proper angle

The screenshot shows a web browser window displaying the Rosco fleet management interface. The main content area features a live video feed of an ambulance in a garage. The video feed includes a timestamp '2018/05/10 07:57:22', camera information 'CH1 Q1 4FPS ROSCO', and a signal strength indicator 'RSSI: -55'. Below the video are four numbered buttons (1, 2, 3, 4) and a search bar with 'Search' and 'Clear Search' buttons. To the right of the video is a table with columns for 'Status' and 'Live Video'. Below the video and search bar, there is a checkbox for 'Limit Allowed Assets' and a text input field for 'Allowed Assets' with the value '70'.

Status	Live Video
Offline	Launch
Offline	Launch
Offline	Launch
Online	Launch
Online	Launch
Offline	Launch
Offline	Launch
Offline	Launch
Offline	Launch
Offline	Launch

