



## 2008-2018 Chevy Express Van Install Guide

This guide will show the proper procedures to install a Dual-Vision XC4 Camera in a 2008-2018 Chevy Express Van. Please review the Installation Guidelines for grounding and making connections prior to installing.

**After testing and verifying power wires, disconnect the negative battery terminal to prevent any accidental shorts or blown fuses**

Verify no vehicle service lights are on prior to installation. Contact a Fleet Manager immediately if the vehicle has any damage

UPDATED October 15<sup>th</sup>, 2018

\*\*\*NEW PART\*\*\*

\*\*\*Harness DV457 is needed if trigger wires are being connected\*\*\*

For Technical Support please contact our support team at:

[Techsupport@Roscovision.com](mailto:Techsupport@Roscovision.com)



Gray – Caution

Red – Warning

Blue – Extra Installation Parts Needed

Purple – New Installation





## 2008-2018 Chevy Express Van Install Guide

Before starting your install, its best to prep the windshield for recorder mounting

Giving the VHB tape time to cure before mounting the Recorder will give you a permanent bond and prevent recorders from falling.

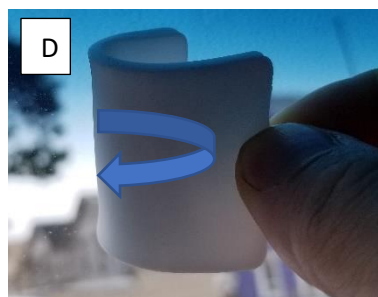


- A- Squeeze to release primer and apply to the windshield
- B- Apply Primer to the bracket
- C- Wait for the primer to dry leaving a dull haze on the windshield

**IMPORTANT:** VHB Tape should only be applied when windshield temperature is within 50°F-100°F (10°C-38°C) to allow proper curing of mounting adhesive pads.

Run the defrost on high heat or use a heat gun in colder temperatures

After windshield is the correct temperature apply the VHB tape marked **PERMANENT** by rolling the tape on the windshield (D)



Using your thumb push firmly around all edges of the VHB tape

Proceed to the next page for Step 1 of the installation

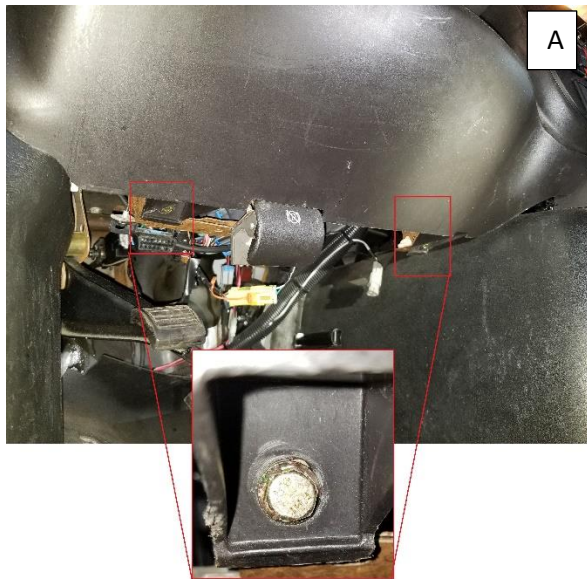




## 2008-2018 Chevy Express Van Install Guide

### Step 1 – Dash Removal:

- Remove the two 10MM Bolts located on both sides of the lower dash (Photo A)
- Using a panel tool, carefully pry the lower dash panel and remove (Photo B)

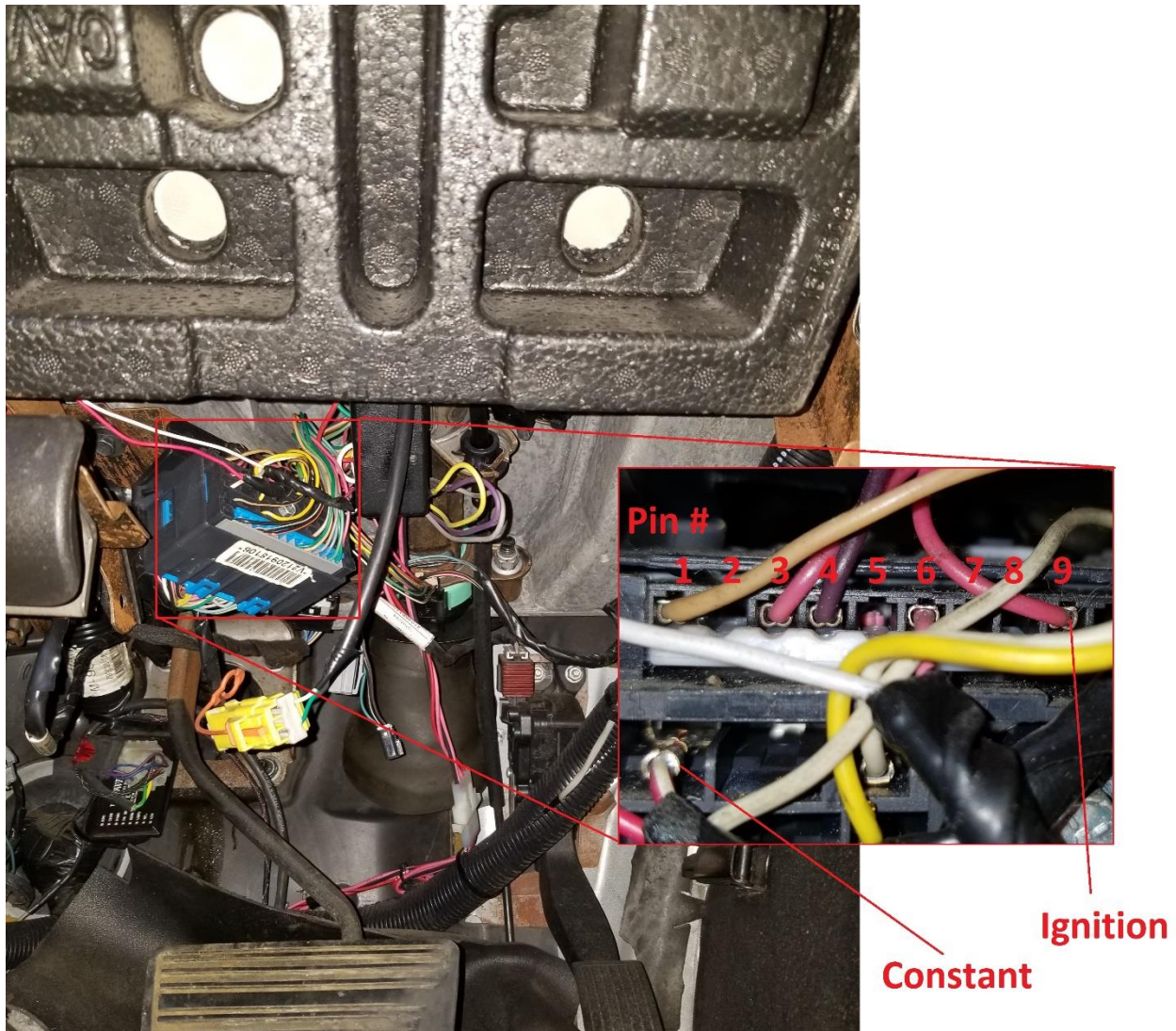




## 2008-2018 Chevy Express Van Install Guide

### Step 2- Power Connections:

- The Constant & Ignition wires are located at the Junction plug in the center of the lower dash
- Connect the RED constant wire to the vehicles Red/White wire
- Connect the YELLOW ignition wire to the vehicles Pink wire (Pin #9)



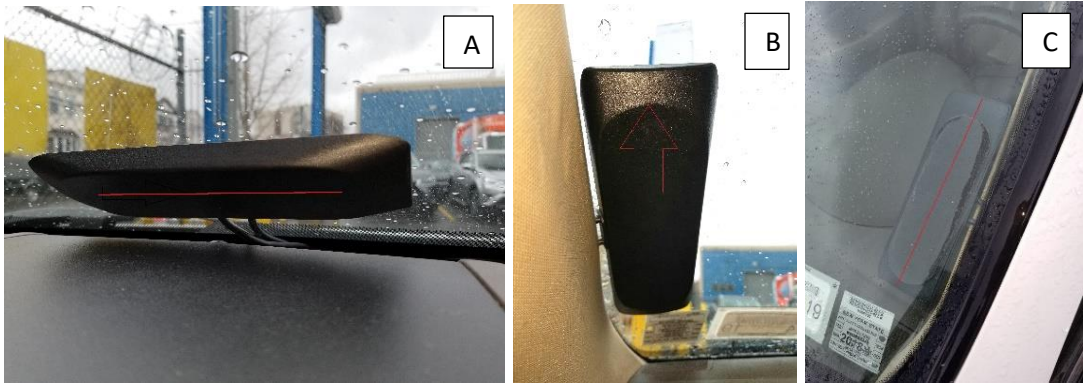


## 2008-2018 Chevy Express Van Install Guide

### Step 3 - Antenna Mounting:

The Manufacture recommends mounting the antenna on the windshield

Mount the antenna on the same side of the vehicle as the PDC



Notice the angled part of the antenna is on the **inside** of the vehicle (Photo A & B). Make sure the **FLAT SIDE** of the antenna has a **CLEAR VIEW OF THE SKY** and is facing **OUTSIDE** (Photo C)



After all connections are made, coil up all the extra antenna cable (Photo A)

Never bend the cable. This will cause signal loss and damage to the antenna (Photo B)

Please refer to the Antenna Installation Guideline for complete details





## 2008-2018 Chevy Express Van Install Guide

### Step 4 - PDC & Modem Connections:

- Connect the USB cable from the modem to the PDC and secure with a zip tie (Photo A)
- Connect the Antenna cable to the modem (Photo B)
- Make these connections prior to mounting the modem & PDC
- Make sure the screw on the modem cover is secured and doesn't move or bend (Photo C)



Connect the MIMO 1 antenna wire to the Modems PRI connector



Connect the MIMO 2 antenna wire to the Modems DIV connector





## 2008-2018 Chevy Express Van Install Guide

### Step 5 - Modem & PDC Mounting:

- The Modem is mounted on the left side of the lower dash, behind the headlight controls.
- Secure the modem to the harness with a zip tie





## 2008-2018 Chevy Express Van Install Guide

### Modem & PDC Mounting (Continued):

- The PDC is located behind the center console, with access on the right side of the lower dash
- Secure the PDC to the large loom factory harness





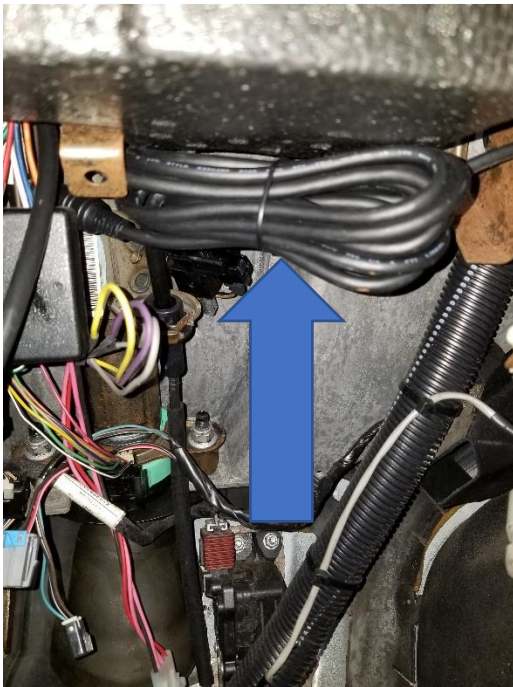


## 2008-2018 Chevy Express Van Install Guide

IT'S IMPORTANT TO NEATLY ZIP TIE WIRES TO A FACTORY BRACKET OR HARNESS TO PREVENT FROM FALLING. KEEP AWAY FROM THE STEERING FUNCTIONS AND ANY MOVING PARTS

### Step 6 – Wire Routing:

- Bundle up the extra wire and zip tie it to the factory bracket or harness in the top of the dash cavity
- Follow factory wires when routing and stay clear of steering wheel tilt, or parking brake mechanism



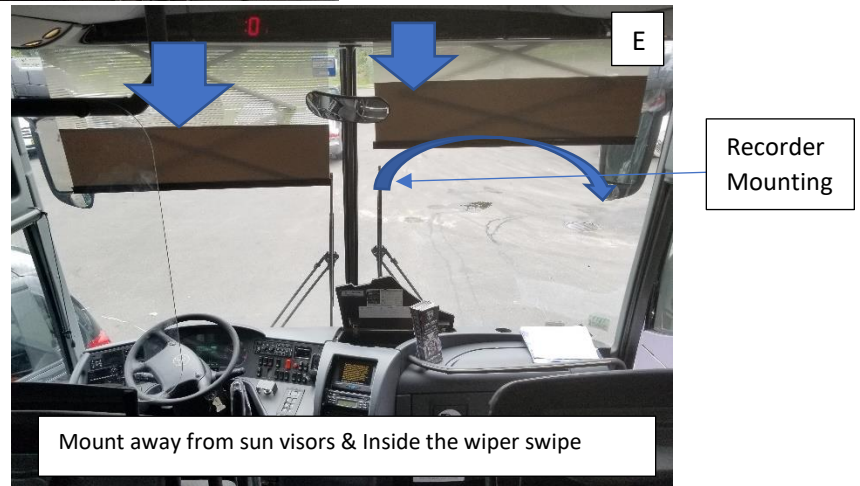
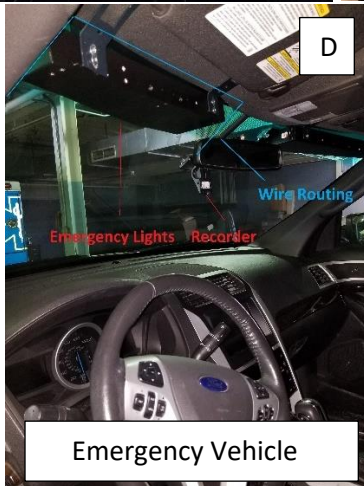
**PLEASE READ THE RECORDER MOUNTING & VHB TAPE INSTALLATION GUIDELINE BEFORE  
PROCEEDING TO THE NEXT STEP**





## 2008-2018 Chevy Express Van Install Guide

### Step 7 - Recorder Mounting:



For small passenger vehicles, mount the Recorder under the rear-view mirror (Photo A).

If the vehicle has any factory sensors under the rear-view mirror, mount the Recorder to the right of the mirror, not causing a distraction to the driver (Photo B).

For larger trucks or busses (With split windows), mount the Recorder on the right panel (Photo C) and INSIDE the wiper swipe. Keeping the Recorder INSIDE the swipe will ensure rain or snow will not interfere with the video.

When working on emergency vehicles use extreme caution when routing wires around emergency lights and equipment (Photo D)

Always pull down the vehicles sun visors to make sure they don't block or interfere with the Recorder or the video (Photo E). Notice the swipe of the wiper blades. For vehicles like this, mount the Recorder under the visor, inside the swipe.





# 2008-2018 Chevy Express Van Install Guide

To verify proper angle & correct mounting, press the driver activity button. Logon to your Rosco account and view activity to confirm proper angle

The screenshot shows a web browser window with the URL [www.roscolive.com/Administration/Fleets/EditFleet.aspx?f=211](https://rosco.roscolive.com/Administration/Fleets/EditFleet.aspx?f=211). The main content area displays a live video feed from a camera mounted on a vehicle. The video shows a white van in a garage. The video player has a timestamp of 2018/05/10 07:57:22, channel information CH1 Q1 4FPS ROSCO, and an RSSI signal of -55. Below the video are four numbered buttons (1, 2, 3, 4) and a search bar with 'Search' and 'Clear Search' buttons. To the right of the video is a table with two columns: 'Status' and 'Live Video'. The table contains ten rows of data. Below the table is a checkbox for 'Limit Allowed Assets' which is checked, and a text input field for 'Allowed Assets' with the value '70'.

Status	Live Video
Offline	Launch
Offline	Launch
Offline	Launch
Online	Launch
Online	Launch
Offline	Launch
Offline	Launch
Offline	Launch
Offline	Launch
Offline	Launch

