



2010 Chevy/GMC Bus Installation Guide

This guide will show the proper way to install a Dual-Vision XC4 Camera in a 2010 Chevy/GMC Bus. Please review the Installation Guidelines for grounding and making connections prior to installing. In this guide you will find dash removal, wire locations, & mounting locations.

Verify no vehicle service lights are on prior to installation. Contact a Fleet Manager immediately if the vehicle has any damage

After testing and verifying power wires, disconnect the negative battery terminal to prevent any accidental shorts or blown fuses

UPDATED October 15th, 2018

NEW PART

Harness DV457 is needed if trigger wires are being connected

For Technical Support please contact our support team at:

Techsupport@Roscovision.com



Gray – Caution

Red – Warning

Blue – Extra Installation Parts Needed

Purple – New Installation



Version 4.10.2

Proprietary and Confidential

2010 Chevy/GMC Bus



2010 Chevy/GMC Bus Installation Guide

Before starting your install, its best to prep the windshield for recorder mounting
Giving the VHB tape time to cure before mounting the Recorder will give you a permanent bond and prevent recorders from falling.

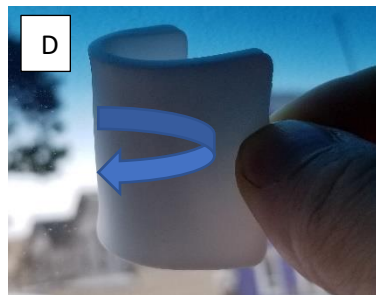


- A- Squeeze to release primer and apply to the windshield
- B- Apply Primer to the bracket
- C- Wait for the primer to dry leaving a dull haze on the windshield

IMPORTANT: VHB Tape should only be applied when windshield temperature is within 50°F-100°F (10°C-38°C) to allow proper curing of mounting adhesive pads.

Run the defrost on high heat or use a heat gun in colder temperatures

After windshield is the correct temperature apply the VHB tape marked **PERMANENT** by rolling the tape on the windshield (D)



Using your thumb push firmly around all edges of the VHB tape

Proceed to the next page for Step 1 of the installation

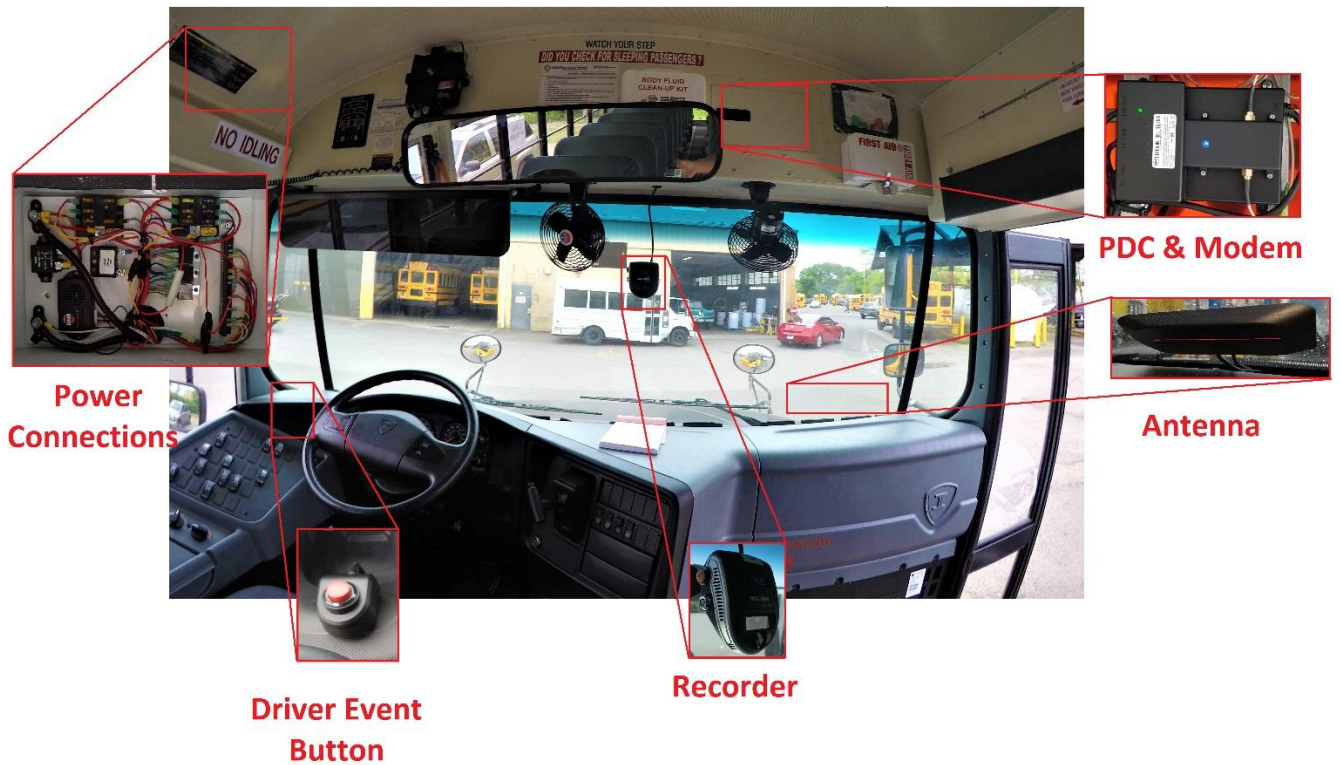




2010 Chevy/GMC Bus Installation Guide

Installation Layout

Always use a grommet when running wires through access panels



Before starting your installation please take note of component mounting locations.





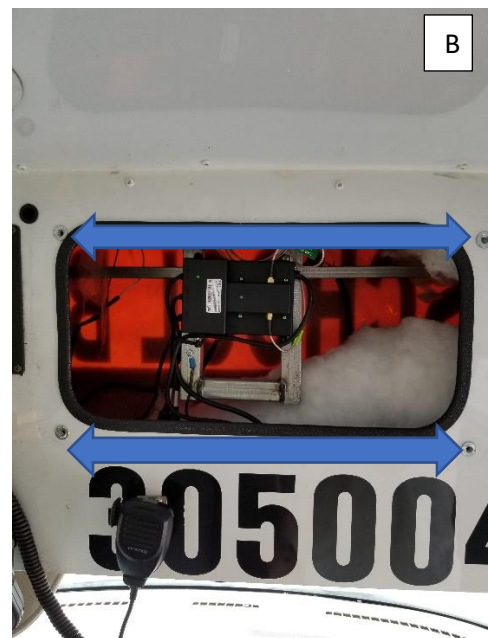
2010 Chevy/GMC Bus Installation Guide

Step 1 - Panel Removal:

- Remove the four Philips screws on the front access panel located on top of the driver (Photo A)
- Remove the four Philips screws on the driver's side access panel located on top of driver's side door (Photo B)



Drivers Side Access Panel



Front Access Panel



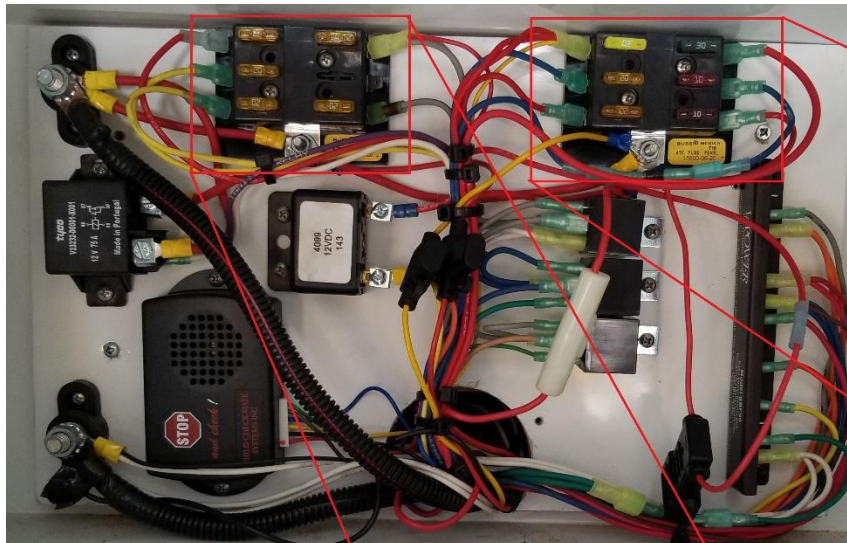


2010 Chevy/GMC Bus Installation Guide

Step 2 - Power Connections:

ALWAYS TEST WIRES FIRST TO VERIFY CONSTANT AND IGNITION FUSE BLOCK!

- Remove the 10MM bolt on the fuse distribution block
- Connect a ring terminal on the RED CONSTANT wire and connect it to the factory fuse block on the left
- Connect a ring terminal on the YELLOW IGNITION wire and connect it to the factory fuse block on the right



Ignition



Constant



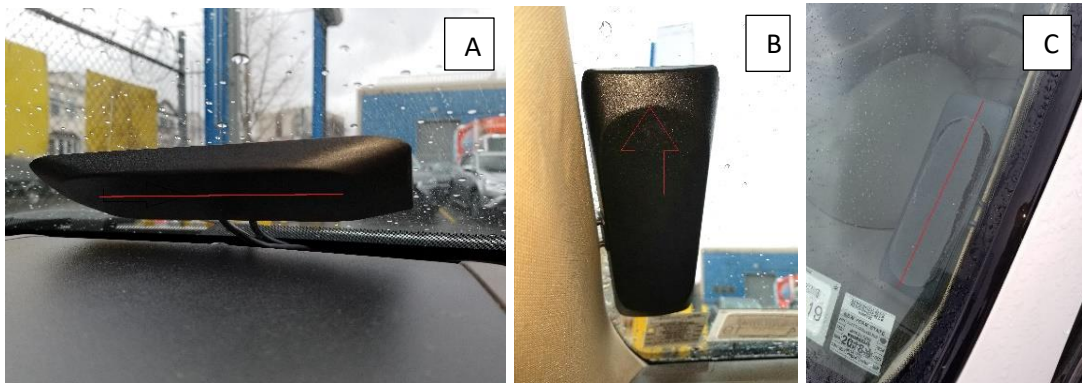


2010 Chevy/GMC Bus Installation Guide

Step 3 - Antenna Mounting:

The Manufacture recommends mounting the antenna on the windshield

Mount the antenna on the same side of the vehicle as the PDC



Notice the angled part of the antenna is on the **inside** of the vehicle (Photo A & B). Make sure the **FLAT SIDE** of the antenna has a **CLEAR VIEW OF THE SKY** and is facing **OUTSIDE** (Photo C)



After all connections are made, coil up all the extra antenna cable (Photo A)

Never bend the cable. This will cause signal loss and damage to the antenna (Photo B)

Please refer to the Antenna Installation Guideline for complete details



Version 4.10.2

Proprietary and Confidential

2010 Chevy/GMC Bus



2010 Chevy/GMC Bus Installation Guide

Please review the WIFI Installation Guideline if you're not using the 4G Modem

Step 4 - PDC & Modem Connections:

- Connect the USB cable from the modem to the PDC and secure with a zip tie (Photo A)
- Connect the Antenna cable to the modem (Photo B)
- Make these connections prior to mounting the modem & PDC
- Make sure the screw on the modem cover is secured and doesn't move or bend (Photo C)



Connect the MIMO 1 antenna wire to the Modems PRI connector



Connect the MIMO 2 antenna wire to the Modems DIV connector

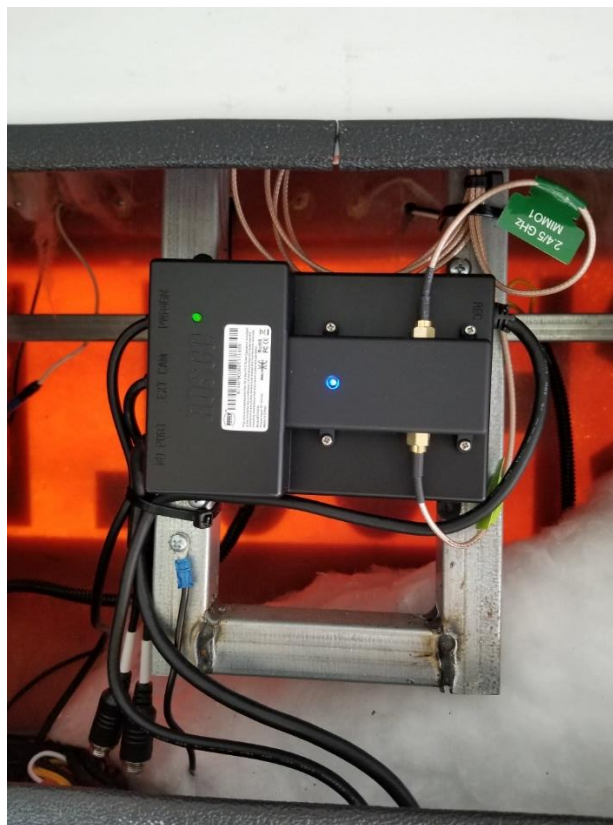




2010 Chevy/GMC Bus Installation Guide

Step 5 - PDC & Modem Mounting Location:

Always screw or zip tie the PDC & Modem. Please note this vehicle has a bracket installed that fits the PDC. If you don't have a bracket in the front access panel find a secure location to secure components with a zip tie or screw



Front Access Panel

IT'S IMPORTANT TO NEATLY ZIP TIE WIRES TO A FACTORY BRACKET OR HARNESS TO PREVENT FROM FALLING. KEEP AWAY FROM THE STEERING FUNCTIONS AND ANY MOVING PARTS

PLEASE READ THE RECORDER MOUNTING & VHB TAPE INSTALLATION GUIDELINE BEFORE PROCEEDING TO THE NEXT STEP



Version 4.10.2

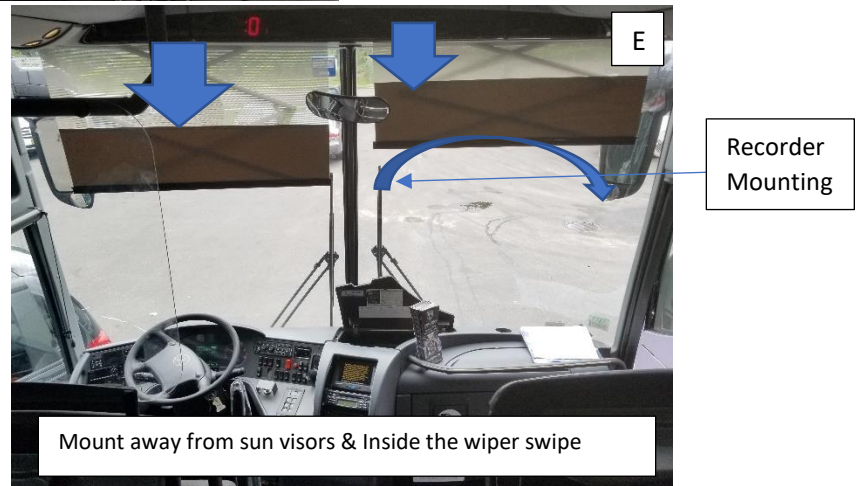
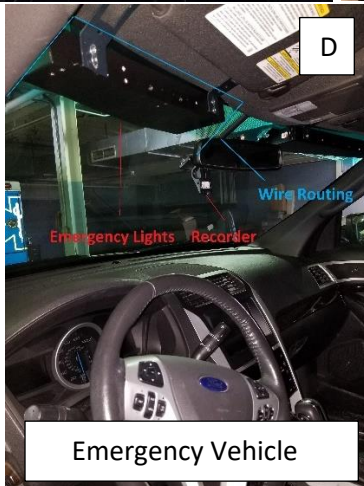
Proprietary and Confidential

2010 Chevy/GMC Bus



2010 Chevy/GMC Bus Installation Guide

Step 6- Camera Mounting and wire Routing:



For small passenger vehicles, mount the Recorder under the rear-view mirror (Photo A).

If the vehicle has any factory sensors under the rear-view mirror, mount the Recorder to the right of the mirror, not causing a distraction to the driver (Photo B).

For larger trucks or busses (With split windows), mount the Recorder on the right panel (Photo C) and INSIDE the wiper swipe. Keeping the Recorder INSIDE the swipe will ensure rain or snow will not interfere with the video.

When working on emergency vehicles use extreme caution when routing wires around emergency lights and equipment (Photo D)

Always pull down the vehicles sun visors to make sure they don't block or interfere with the Recorder or the video (Photo E). Notice the swipe of the wiper blades. For vehicles like this, mount the Recorder under the visor, inside the swipe.



Version 4.10.2

Proprietary and Confidential

2010 Chevy/GMC Bus



2010 Chevy/GMC Bus Installation Guide

To verify proper angle & correct mounting, press the driver activity button. Logon to your Rosco account and view activity to confirm proper angle

The screenshot shows a web browser window displaying the Rosco fleet management interface. The main content area features a live video feed of a bus in a garage. The video feed includes a timestamp '2018/05/10 07:57:22', camera information 'CH1 Q1 4FPS ROSCO', and a signal strength indicator 'RSSI: -55'. Below the video are four numbered buttons (1, 2, 3, 4) and a search bar with 'Search' and 'Clear Search' buttons. To the right of the video is a table with two columns: 'Status' and 'Live Video'. The table contains ten rows of data. Below the table is a checkbox for 'Limit Allowed Assets' which is checked, and a text input field for 'Allowed Assets' with the value '70'.

Status	Live Video
Offline	Launch
Offline	Launch
Offline	Launch
Online	Launch
Online	Launch
Offline	Launch
Offline	Launch
Offline	Launch
Offline	Launch
Offline	Launch



Version 4.10.2

Proprietary and Confidential

2010 Chevy/GMC Bus