



2013-2015 Lincoln MKS Install Guide (For Push to Start Vehicles)

This guide will show the proper way to install a Dual-Vision XC4 Camera in a 2013-2015 Lincoln MKS. Please review the Service Bulletins for grounding and making connections prior to installing. This manual will explain dash removal, wire locations, & mounting locations.

PLEASE NOTE: THIS GUIDE IS FOR PUSH TO START VEHICLES ONLY!

After testing and verifying power wires, disconnect the negative battery terminal to prevent any accidental shorts or blown fuses

Verify no vehicle service lights are on prior to installation. Contact a Fleet Manager immediately if the vehicle has any damage

UPDATED October 15th, 2018

NEW PART

Harness DV457 is needed if trigger wires are being connected

For Technical Support please contact our support team at:

Techsupport@Roscovision.com



Gray – Caution

Red – Warning

Blue – Extra Installation Parts Needed

Purple – New Installation





2013-2015 Lincoln MKS Install Guide (For Push to Start Vehicles)

Before starting your install, its best to prep the windshield for recorder mounting

Giving the VHB tape time to cure before mounting the Recorder will give you a permanent bond and prevent recorders from falling.

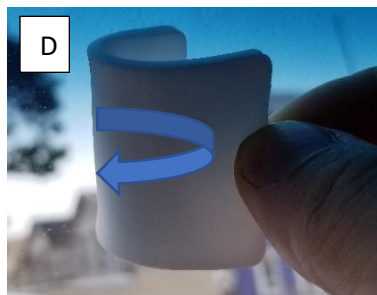


- A- Squeeze to release primer and apply to the windshield
- B- Apply Primer to the bracket
- C- Wait for the primer to dry leaving a dull haze on the windshield

IMPORTANT: VHB Tape should only be applied when windshield temperature is within 50°F-100°F (10°C-38°C) to allow proper curing of mounting adhesive pads.

Run the defrost on high heat or use a heat gun in colder temperatures

After windshield is the correct temperature apply the VHB tape marked **PERMANENT** by rolling the tape on the windshield (D)



Using your thumb push firmly around all edges of the VHB tape

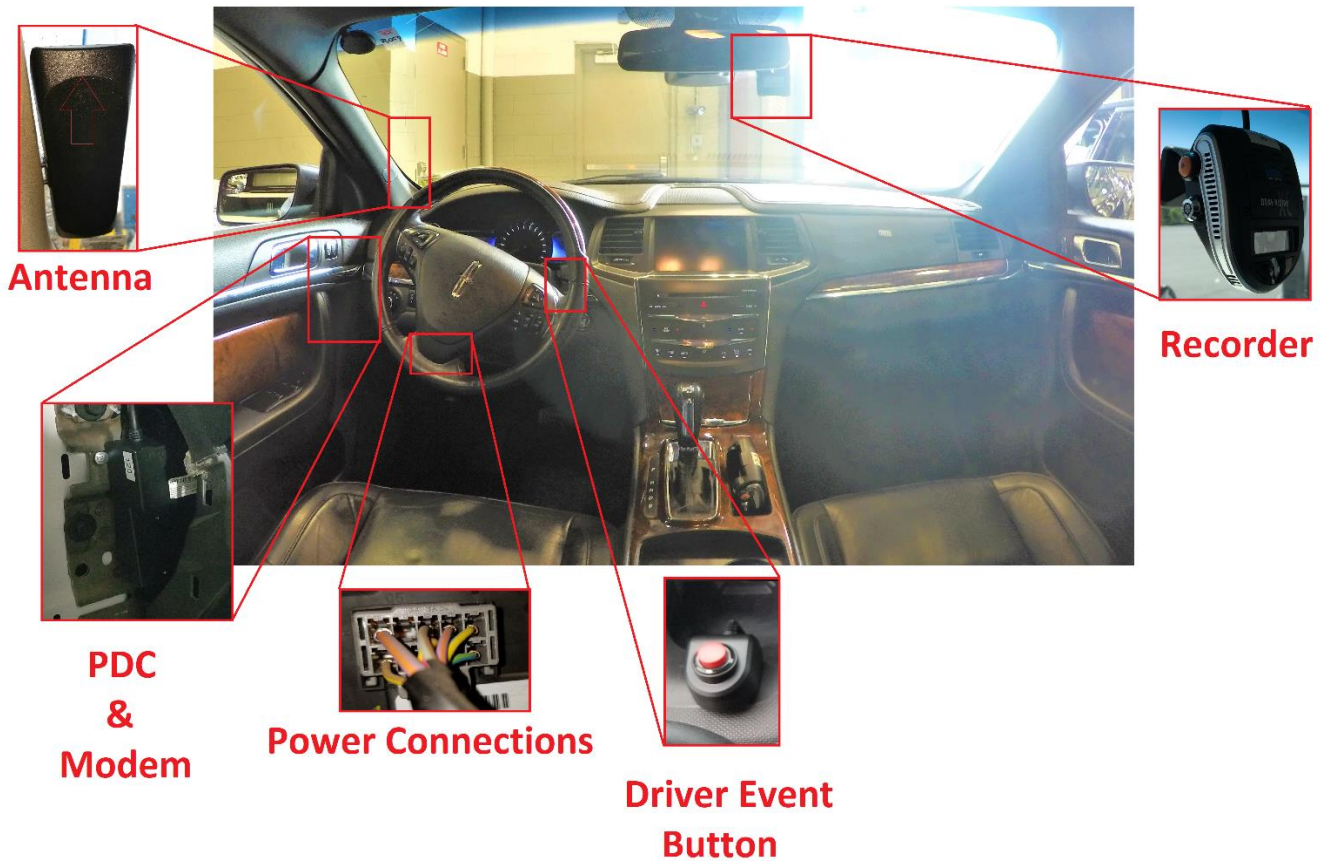
Proceed to the next page for Step 1 of the installation





2013-2015 Lincoln MKS Install Guide (For Push to Start Vehicles)

Installation Layout



Before starting your installation please take note of component mounting locations



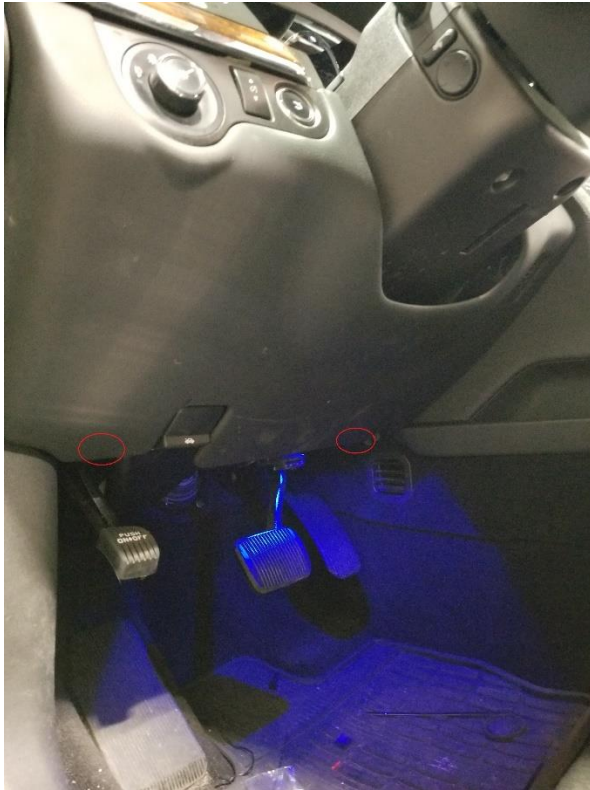


2013-2015 Lincoln MKS Install Guide (For Push to Start Vehicles)

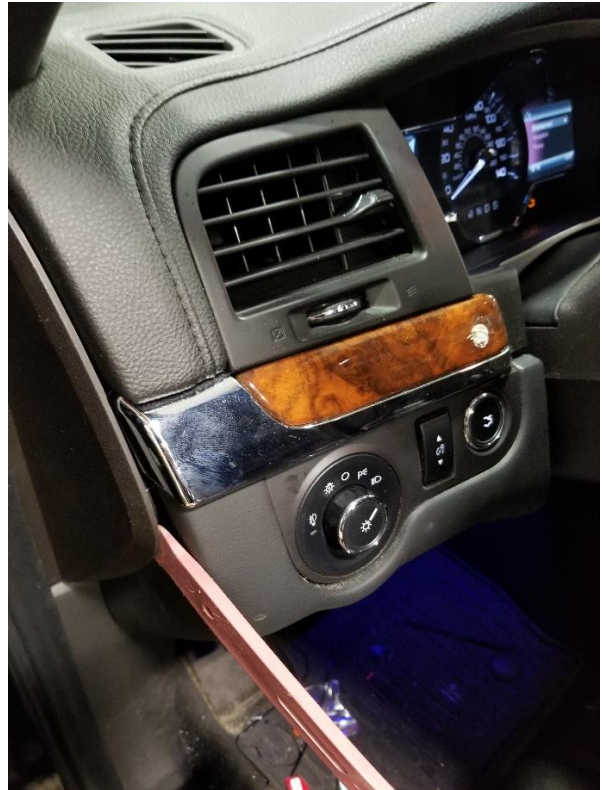
Step 1 - Dash Removal:

- Remove the two 7MM bolts located at the bottom of the dash (Photo A)
- Using a panel tool, carefully pry side panel off (Photo B)

A



B





2013-2015 Lincoln MKS Install Guide (For Push to Start Vehicles)

Dash Removal Continued:

- Carefully pry lower dash starting from under the wood panel. (Photo C)
- Remove all plugs from dash for access to power and mounting locations (Photo D)

C



D



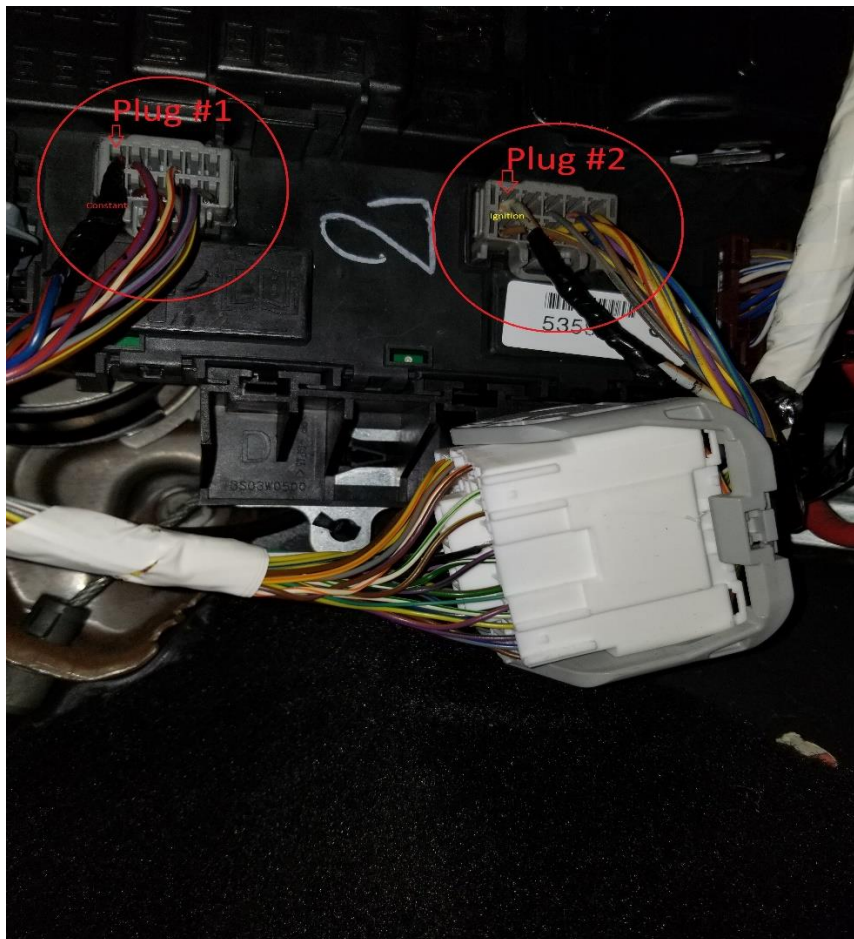


2013-2015 Lincoln MKS Install Guide (For Push to Start Vehicles)

Step 2 - Power Connections:

- Locate the fuse box under the left side of the dash and the two gray plugs that are plugged into the fuse box (Photo E)
- Connect the **RED** constant wire from the DV440 power harness to the vehicles Blue with Red stripe wire. This wire is located at the 12-pin gray plug #1 (Photo E)
- Connect the **Yellow** Ignition wire from the DV440 power harness to the vehicles Gray with Brown stripe wire. This wire is located at the 12-pin gray plug #2 (Photo E)

E





2013-2015 Lincoln MKS Install Guide (For Push to Start Vehicles)

Power Connections (Continued):

- The factory ground harness is located behind the driver's side kick panel
- Using a star washer ring terminal (or a ring terminal and a star washer) use a self-tapper with a low clutch setting on the drill & attach the ground wire under the factory ground harness
- Be sure to scrape away and remove any paint from the surface before grounding (Photo K)

K



K



Version 4.10.2

Proprietary and Confidential

2013-2015 Lincoln MKS

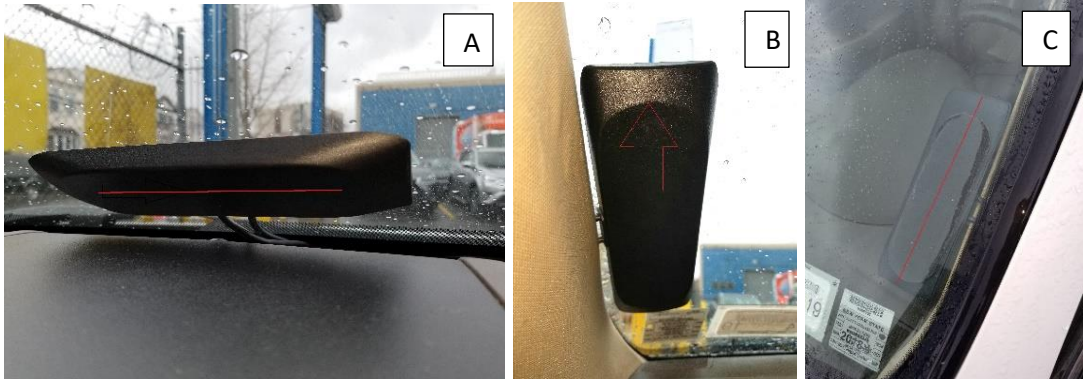


2013-2015 Lincoln MKS Install Guide (For Push to Start Vehicles)

Step 3 - Antenna Mounting:

The Manufacture recommends mounting the antenna on the windshield

Mount the antenna on the same side of the vehicle as the PDC



Notice the angled part of the antenna is on the **inside** of the vehicle (Photo A & B). Make sure the **FLAT SIDE** of the antenna has a **CLEAR VIEW OF THE SKY** and is facing **OUTSIDE** (Photo C)



After all connections are made, coil up all the extra antenna cable (Photo A)

Never bend the cable. This will cause signal loss and damage to the antenna (Photo B)

Please refer to the Antenna Installation Guideline for complete details





2013-2015 Lincoln MKS Install Guide (For Push to Start Vehicles)

Step 4 - PDC & Modem Connections:

- Connect the USB cable from the modem to the PDC and secure with a zip tie (Photo A)
- Connect the Antenna cable to the modem (Photo B)
- Make these connections prior to mounting the modem & PDC
- Make sure the screw on the modem cover is secured and doesn't move or bend (Photo C)



Connect the MIMO 1 antenna wire to the Modems PRI connector



Connect the MIMO 2 antenna wire to the Modems DIV connector





2013-2015 Lincoln MKS Install Guide (For Push to Start Vehicles)

Step 5 - Mounting & Wire Routing:

- The DV440 is mounted inside the cavity of the side panel of the dash (Photo G), secured with 2 self-tapping screws. The extra wire slack can be securely mounted to the factory harness located inside the cavity, behind the headlight controls (Photo H)

G



H



Secure all extra wires & wire slack with Zip ties





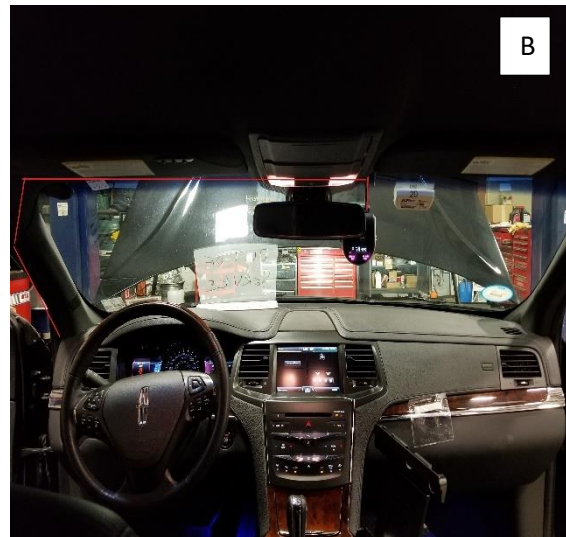
2013-2015 Lincoln MKS Install Guide (For Push to Start Vehicles)

**PLEASE READ THE RECORDER MOUNTING & VHB TAPE INSTALLATION GUIDELINE BEFORE
PROCEEDING TO THE NEXT STEP**

Step 6 - Recorder Mounting & Wire Routing:

- Mount the Recorder in the center of the windshield, under the rearview mirror (Photo A)
- Take note of the angle of the windshield. Make sure the Recorder is adjusted so the camera view is straight out of the windshield (Photo A)
- Run the wire in the headliner to the driver's side A pillar (Photo B)

Avoid placing the Recorder in any blind spots or areas that may cause distractions to the driver





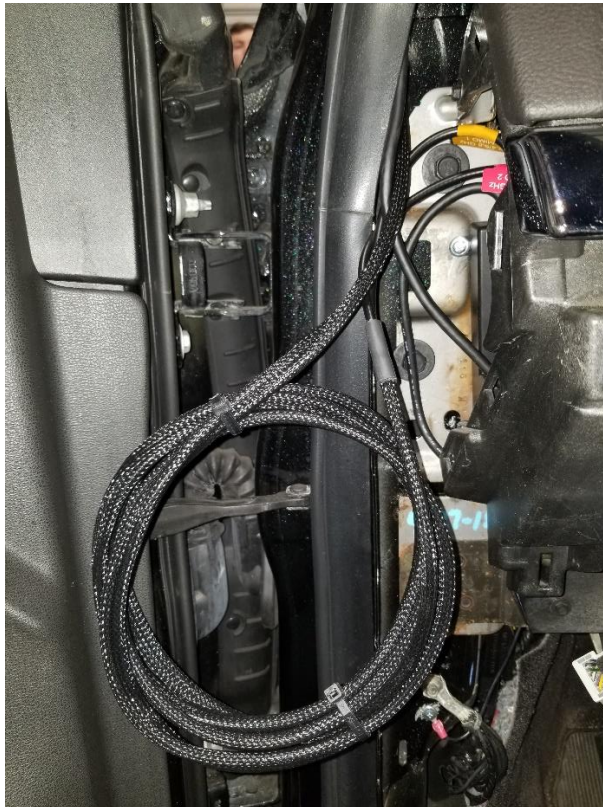
2013-2015 Lincoln MKS Install Guide (For Push to Start Vehicles)

Optional WIFI Adapter:

- If using the optional WIFI Adapter, mount the antenna in the driver's side corner of the windshield and follow the routing of the camera wire

The WIFI antenna cable is very stiff, DO NOT BEND or zip tie too tight. Coil the slack of the wire with 3 zip ties holding it together. Place the coil in the cavity next to the mounted unit (Photo L)

L





2013-2015 Lincoln MKS Install Guide (For Push to Start Vehicles)

To verify proper angle & correct mounting, press the driver activity button. Logon to your Rosco account and view activity to confirm proper angle

The screenshot shows a web browser window displaying a live video feed from a vehicle's camera. The video shows a white van in a garage. The video player has a timestamp of 2018/05/10 07:57:22, channel information CH1 Q1 4FPS ROSCO, and an RSSI signal of -55. Below the video are four numbered buttons (1-4) and a search bar with 'Search' and 'Clear Search' buttons. To the right of the video is a table with two columns: 'Status' and 'Live Video'. Below the table is a checkbox for 'Limit Allowed Assets' and a text input field for 'Allowed Assets' with the value '70'.

Status	Live Video
Offline	Launch
Offline	Launch
Offline	Launch
Online	Launch
Online	Launch
Offline	Launch
Offline	Launch
Offline	Launch
Offline	Launch
Offline	Launch

