



2014 International Install Guide

This guide will show the proper way to install a Dual-Vision XC4 Camera in a 2014 International. Please review the Installation Guidelines for grounding and making connections prior to installing. In this guide you will find dash removal, wire locations, & mounting locations.

Verify no vehicle service lights are on prior to installation. Contact a Fleet Manager immediately if the vehicle has any damage

After testing and verifying power wires, disconnect the negative battery terminal to prevent any accidental shorts or blown fuses

UPDATED October 15th, 2018

NEW PART

Harness DV457 is needed if trigger wires are being connected

For Technical Support please contact our support team at:

Techsupport@Roscovision.com



Gray – Caution

Red – Warning

Blue – Extra Installation Parts Needed

Purple – New Installation



Version 4.10.2

Proprietary and Confidential

2014 International



2014 International Install Guide

Before starting your install, its best to prep the windshield for recorder mounting

Giving the VHB tape time to cure before mounting the Recorder will give you a permanent bond and prevent recorders from falling.

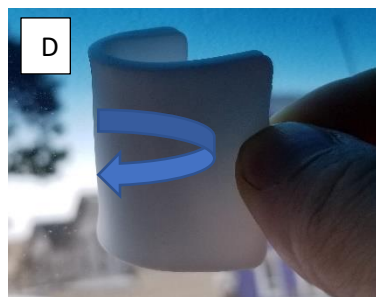


- A- Squeeze to release primer and apply to the windshield
- B- Apply Primer to the bracket
- C- Wait for the primer to dry leaving a dull haze on the windshield

IMPORTANT: VHB Tape should only be applied when windshield temperature is within 50°F-100°F (10°C-38°C) to allow proper curing of mounting adhesive pads.

Run the defrost on high heat or use a heat gun in colder temperatures

After windshield is the correct temperature apply the VHB tape marked **PERMANENT** by rolling the tape on the windshield (D)



Using your thumb push firmly around all edges of the VHB tape

Proceed to the next page for Step 1 of the installation





2014 International Install Guide

Step 1 - Dash Removal:

- Using a panel tool remove the center dash trim panel (Photo A)

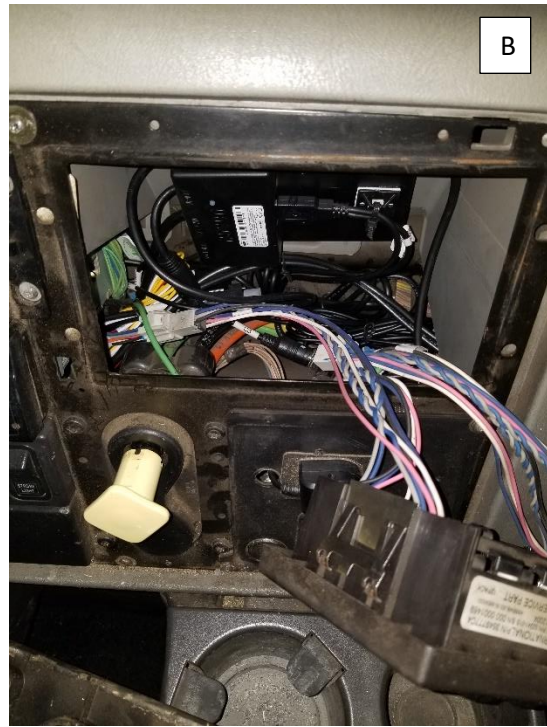




2014 International Install Guide

Dash Removal Continued:

- Using a panel tool remove the switch panel on the center dash (Photo A)
- The PDC, Modem, and extra cable is stored behind this panel (Photo B)
- Secure the PDC with two self-tapping screws
- Secure the modem to a harness below the PDC

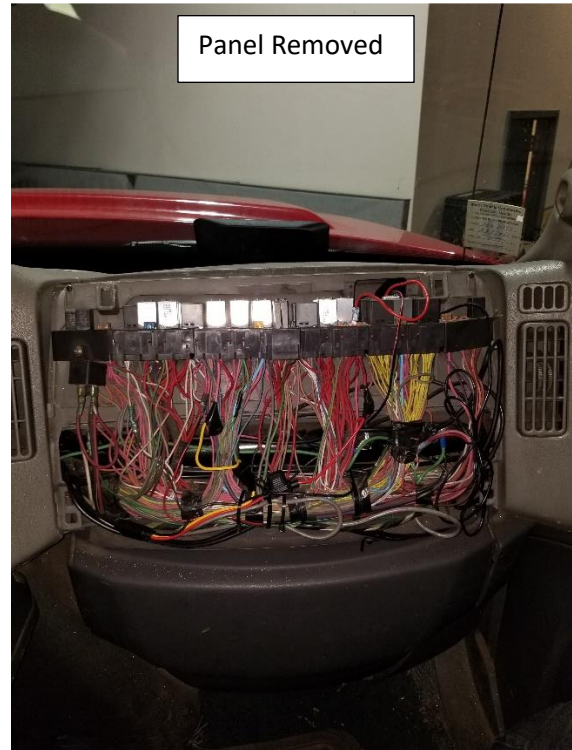
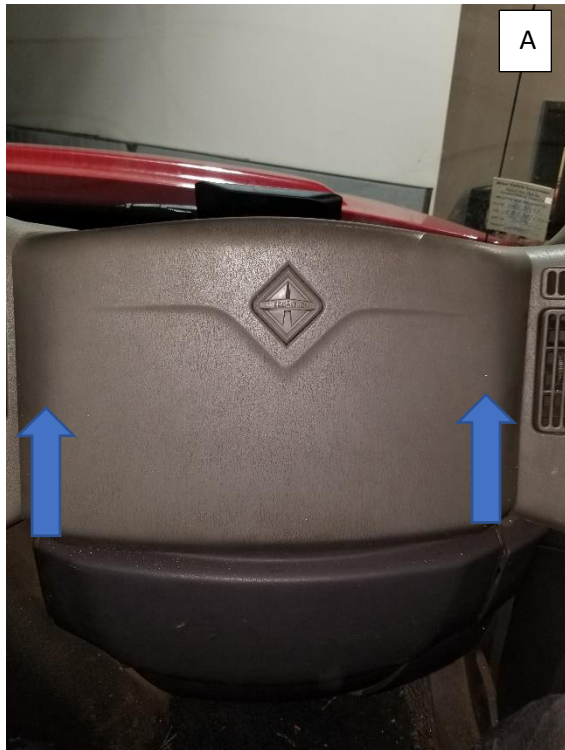




2014 International Install Guide

Step 2 - Power Connections:

- Remove the fuse panel located on the passenger side of the dash
- Pull from the bottom and lift up (Photo A)



International Trucks have multiple wires with the same color. ALWAYS test wiring to confirm the correct connection

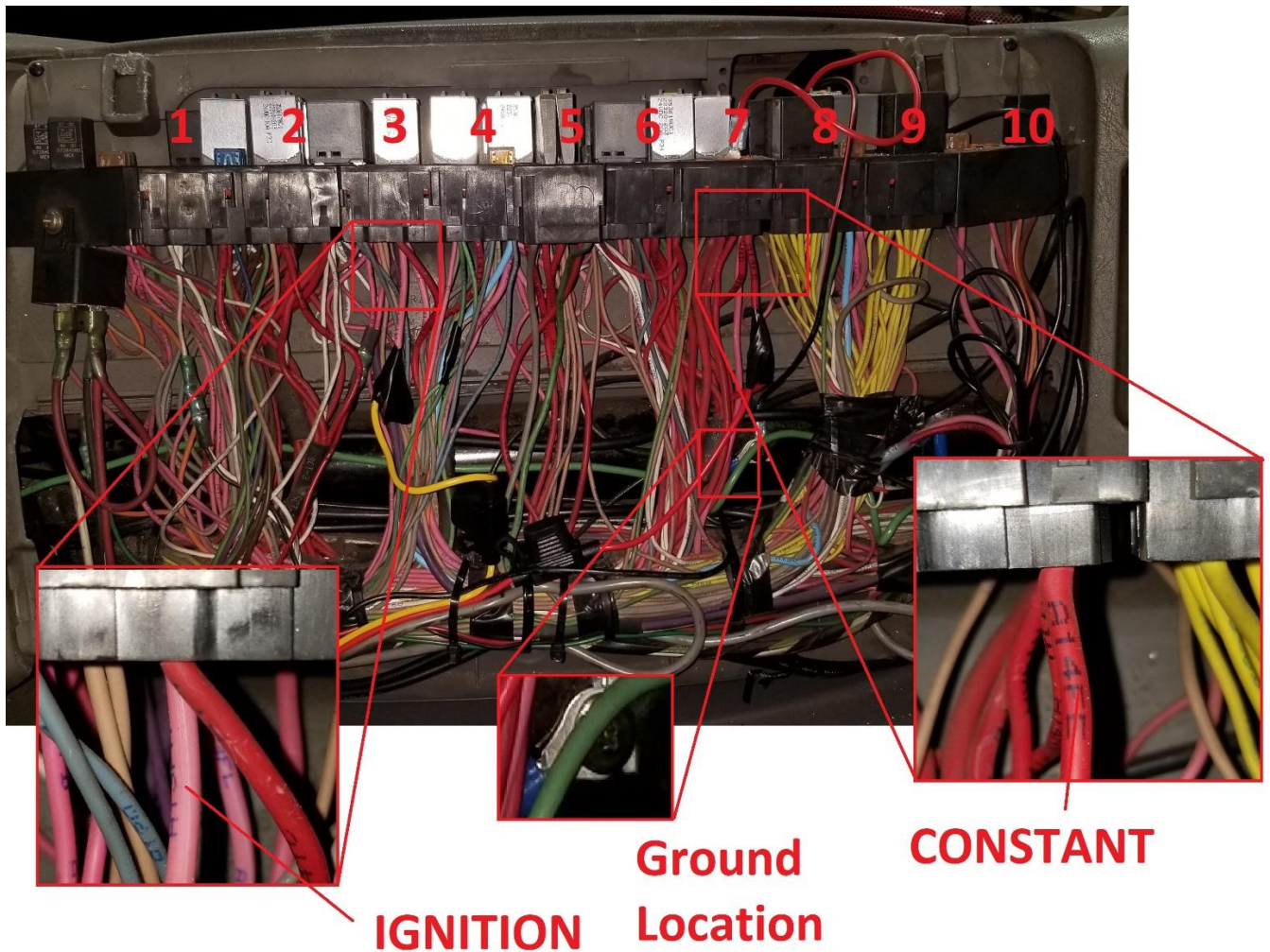




2014 International Install Guide

Power Connections (Continued):

- Connect the RED CONSTANT wire to the vehicles RED wire (Fuse Plug 7)
- Connect the YELLOW IGNITION wire to the vehicles PINK wire (Fuse Plug 3)
- Connect the BLACK ground wire to the metal bracket behind the wiring



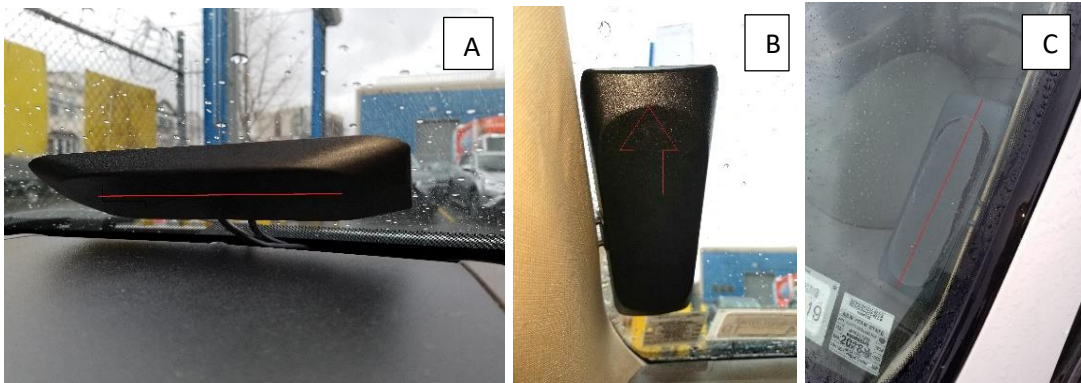


2014 International Install Guide

Step 3 - Antenna Mounting:

The Manufacture recommends mounting the antenna on the windshield

Mount the antenna on the same side of the vehicle as the PDC



Notice the angled part of the antenna is on the **inside** of the vehicle (Photo A & B). Make sure the **FLAT SIDE** of the antenna has a **CLEAR VIEW OF THE SKY** and is facing **OUTSIDE** (Photo C)



After all connections are made, coil up all the extra antenna cable (Photo A)

Never bend the cable. This will cause signal loss and damage to the antenna (Photo B)

Please refer to the Antenna Installation Guideline for complete details





2014 International Install Guide

Step 4 - PDC & Modem Connections:

- Connect the USB cable from the modem to the PDC and secure with a zip tie (Photo A)
- Connect the Antenna cable to the modem (Photo B)
- Make these connections prior to mounting the modem & PDC
- Make sure the screw on the modem cover is secured and doesn't move or bend (Photo C)



Connect the MIMO 1 antenna wire to the Modems PRI connector



Connect the MIMO 2 antenna wire to the Modems DIV connector

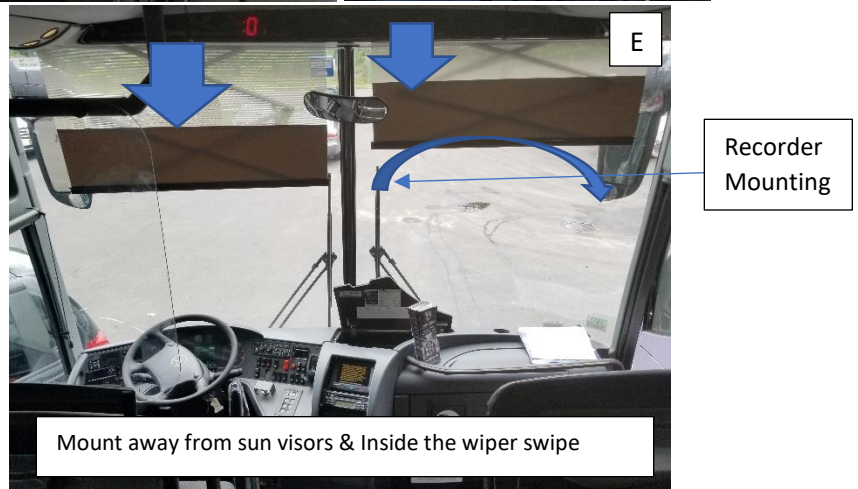
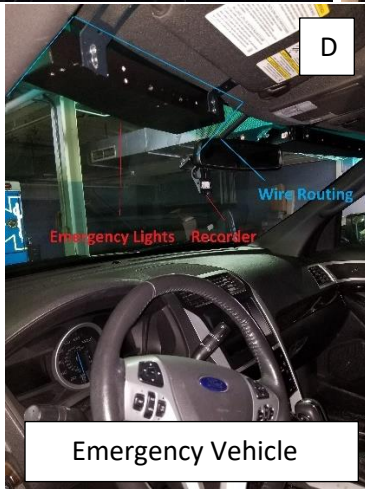
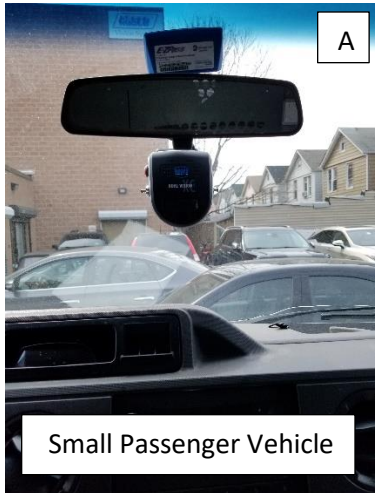
PLEASE READ THE RECORDER MOUNTING & VHB TAPE INSTALLATION GUIDELINE BEFORE PROCEEDING TO THE NEXT STEP





2014 International Install Guide

Step 5 - Camera Mounting and wire Routing:



For small passenger vehicles, mount the Recorder under the rear-view mirror (Photo A).

If the vehicle has any factory sensors under the rear-view mirror, mount the Recorder to the right of the mirror, not causing a distraction to the driver (Photo B).

For larger trucks or busses (With split windows), mount the Recorder on the right panel (Photo C) and INSIDE the wiper swipe. Keeping the Recorder INSIDE the swipe will ensure rain or snow will not interfere with the video.

When working on emergency vehicles use extreme caution when routing wires around emergency lights and equipment (Photo D)

Always pull down the vehicles sun visors to make sure they don't block or interfere with the Recorder or the video (Photo E). Notice the swipe of the wiper blades. For vehicles like this, mount the Recorder under the visor, inside the swipe.



Version 4.10.2

Proprietary and Confidential

2014 International



2014 International Install Guide

To verify proper angle & correct mounting, press the driver activity button. Logon to your Rosco account and view activity to confirm proper angle

The screenshot shows a web browser window displaying the Rosco administration interface. The main content area features a live video feed of a white van in a garage. The video feed includes a timestamp '2018/05/10 07:57:22', channel information 'CH1 Q1 4FPS ROSCO', and an RSSI signal strength indicator 'RSSI: -55'. Below the video feed are four numbered buttons (1, 2, 3, 4) and a search bar with 'Search' and 'Clear Search' buttons. To the right of the video feed is a table with two columns: 'Status' and 'Live Video'. The table contains ten rows of data, alternating between 'Offline' and 'Online' status, each with a 'Launch' button. Below the table is a checkbox labeled 'Limit Allowed Assets' which is checked, and a text input field for 'Allowed Assets' with the value '70'.

Status	Live Video
Offline	Launch
Offline	Launch
Offline	Launch
Online	Launch
Online	Launch
Offline	Launch
Offline	Launch
Offline	Launch
Offline	Launch
Offline	Launch

