



2017-2018 Ford Step Van Installation Guide

This guide will show the proper way to install a Dual-Vision XC4 Camera in a 2017-2018 Ford Step Van. Please review the Installation Guidelines for grounding and making connections prior to installing. In this guide you will find dash removal, wire locations, & mounting locations.

Verify no vehicle service lights are on prior to installation. Contact a Fleet Manager immediately if the vehicle has any damage

After testing and verifying power wires, disconnect the negative battery terminal to prevent any accidental shorts or blown fuses

UPDATED October 15th, 2018

NEW PART

Harness DV457 is needed if trigger wires are being connected

For Technical Support please contact our support team at:

Techsupport@Roscovision.com



Gray – Caution

Red – Warning

Blue – Extra Installation Parts Needed

Purple – New Installation



Version 2.10.2

Proprietary and Confidential

2017-2018 Ford Step Van



2017-2018 Ford Step Van Installation Guide

Before starting your install, its best to prep the windshield for recorder mounting
Giving the VHB tape time to cure before mounting the Recorder will give you a permanent bond and prevent recorders from falling.

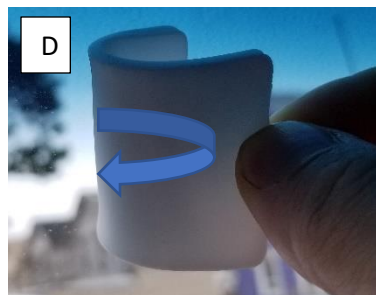


- A- Squeeze to release primer and apply to the windshield
- B- Apply Primer to the bracket
- C- Wait for the primer to dry leaving a dull haze on the windshield

IMPORTANT: VHB Tape should only be applied when windshield temperature is within 50°F-100°F (10°C-38°C) to allow proper curing of mounting adhesive pads.

Run the defrost on high heat or use a heat gun in colder temperatures

After windshield is the correct temperature apply the VHB tape marked **PERMANENT** by rolling the tape on the windshield (D)



Using your thumb push firmly around all edges of the VHB tape

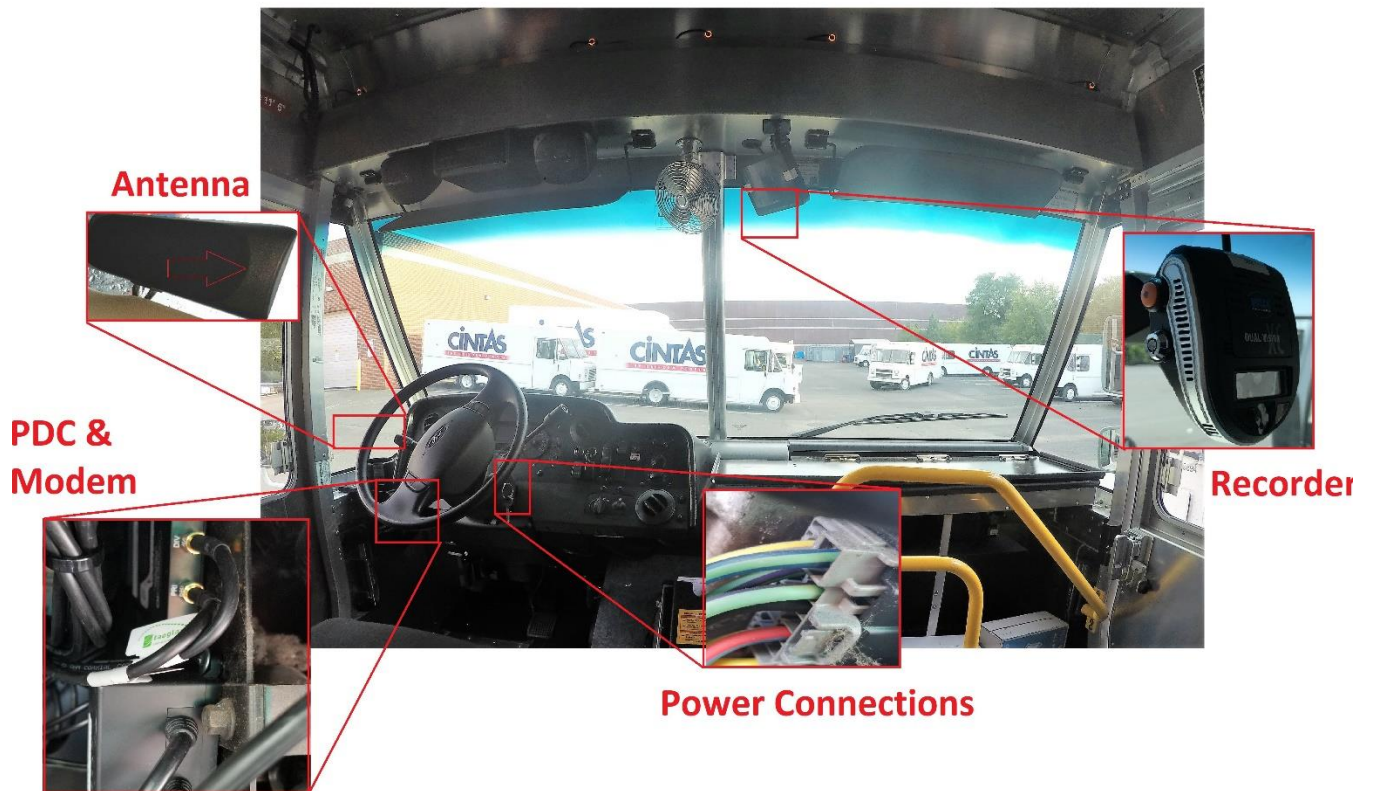
Proceed to the next page for Step 1 of the installation





2017-2018 Ford Step Van Installation Guide

Installation Layout



Before starting your installation, please take note of component mounting locations.

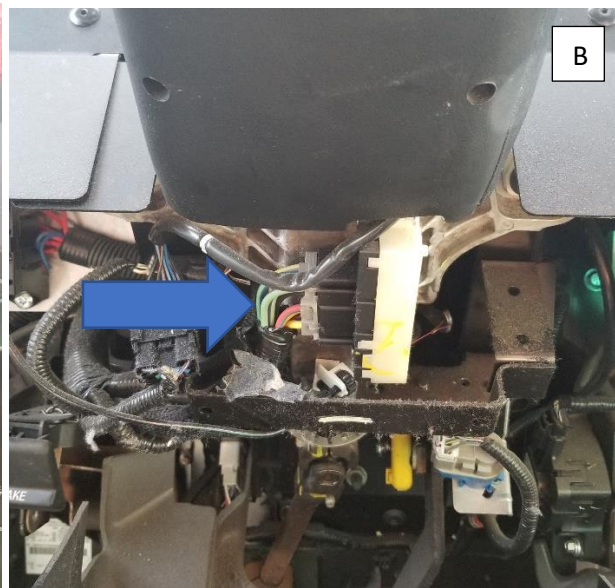




2017-2018 Ford Step Van Installation Guide

Step 1 - Dash Removal:

- Using a panel tool, remove the two nylon clips securing the lower dash panel (Photo A)
- Locate the ignition harness (Photo B)

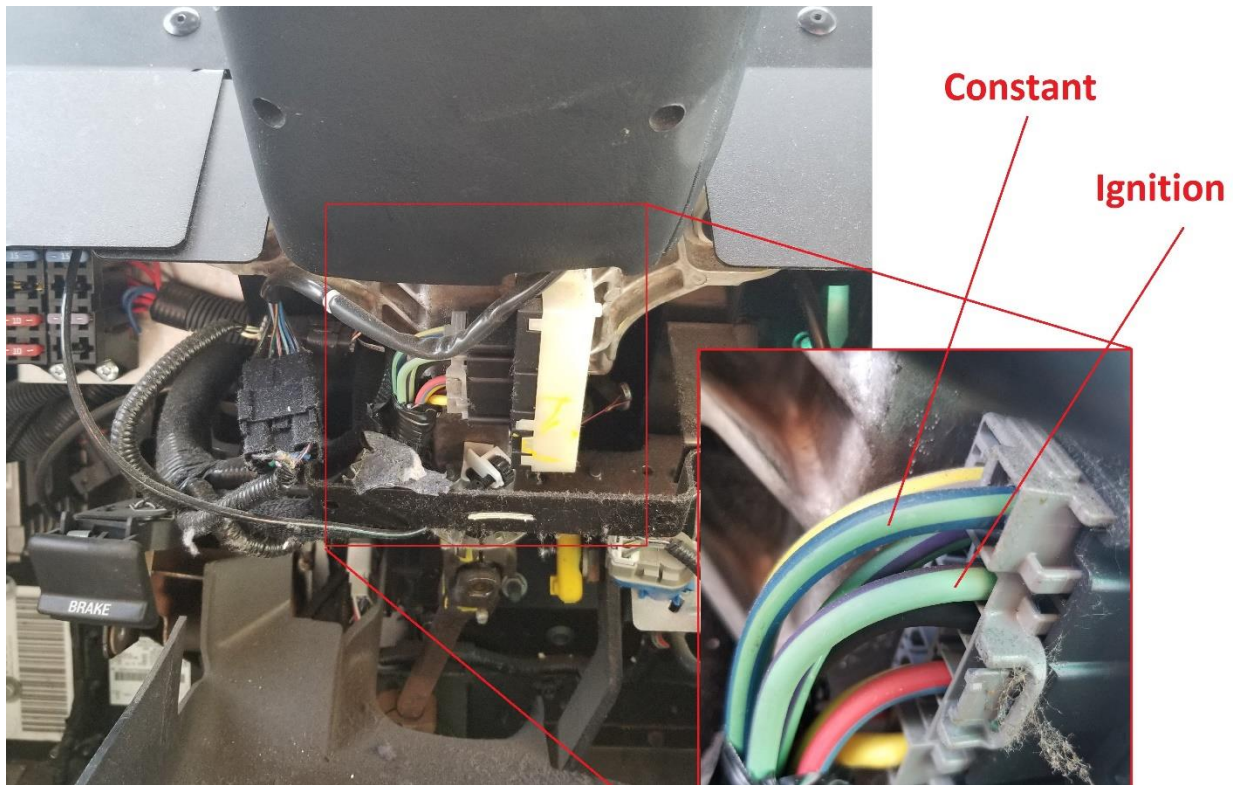




2017-2018 Ford Step Van Installation Guide

Step 2 - Power Connections:

- Connect the RED Constant wire to the Vehicles Blue/Green Wire
- Connect the YELLOW ignition wire to the vehicles Green/Purple wire
- Connect a ring terminal on the BLACK ground wire
- Using a self tapper, ground the wire to the metal support brace behind the ignition wire



Version 2.10.2

Proprietary and Confidential

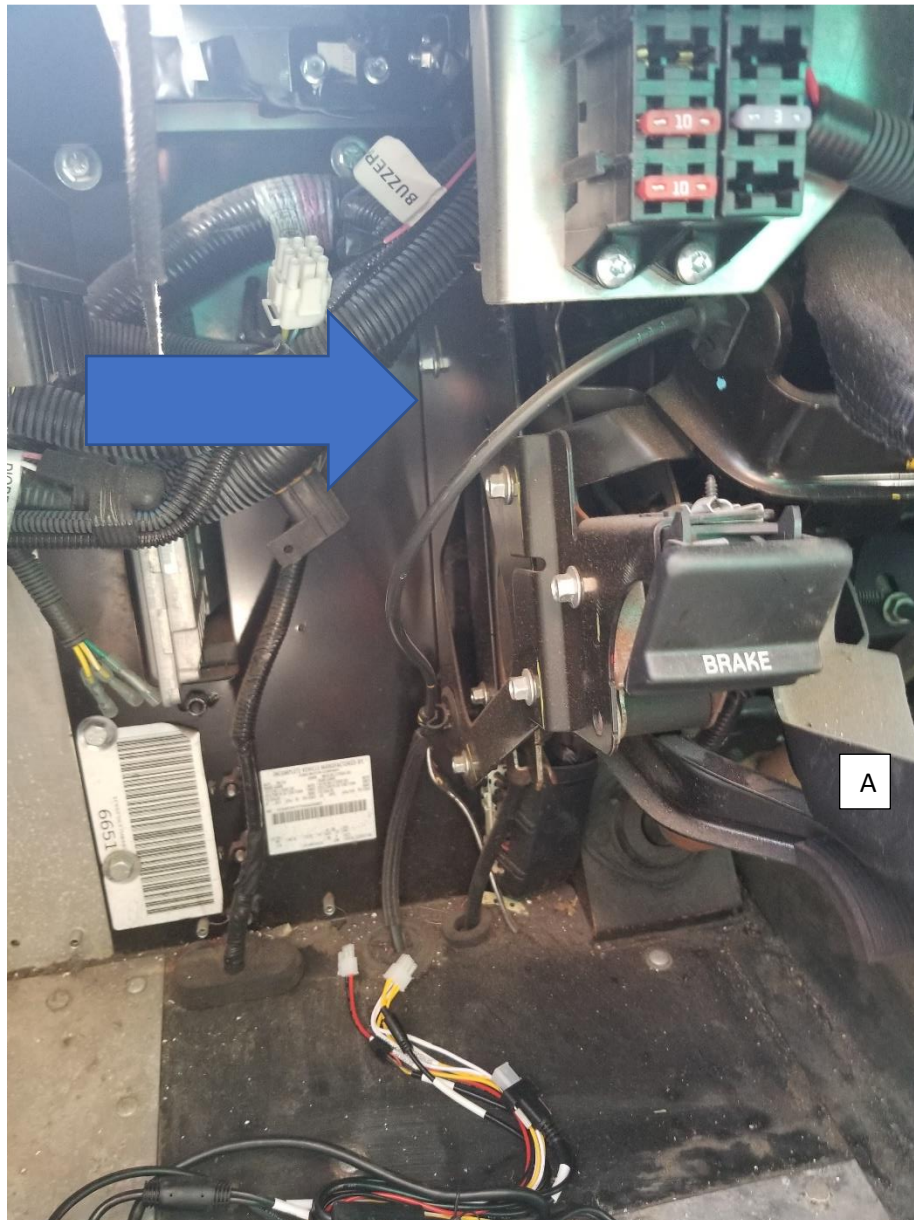
2017-2018 Ford Step Van



2017-2018 Ford Step Van Installation Guide

Step 3 – PDC & Modem Mounting

- The PDC & Modem are mouted with self-tapping screws
- Locate the metal plate under the dash, on the left side of the steering column behind the fuse box





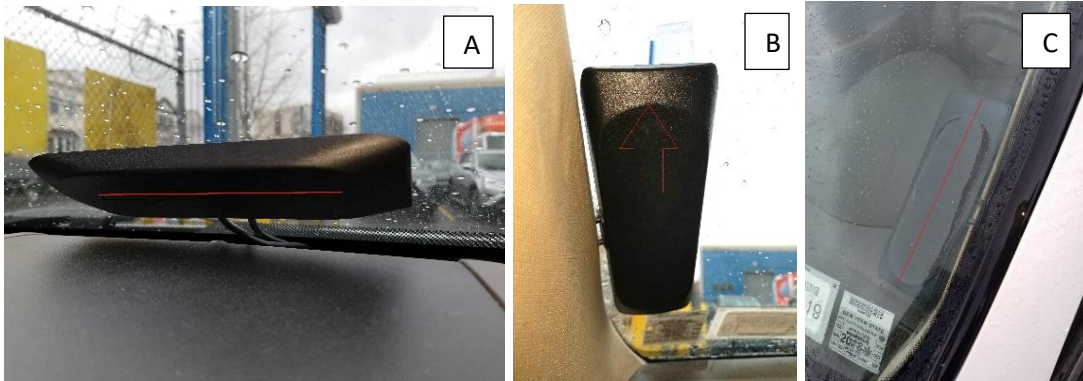
2017-2018 Ford Step Van Installation Guide

Please see Installation Layout on Page 2 for exact mounting location

Step 3 - Antenna Mounting:

The Manufacture recommends mounting the antenna on the windshield

Mount the antenna on the same side of the vehicle as the PDC



Notice the angled part of the antenna is on the **inside** of the vehicle (Photo A & B). Make sure the **FLAT SIDE** of the antenna has a **CLEAR VIEW OF THE SKY** and is facing **OUTSIDE** (Photo C)



After all connections are made, coil up all the extra antenna cable (Photo A)

Never bend the cable. This will cause signal loss and damage to the antenna (Photo B)

Please refer to the Antenna Installation Guideline for complete details





2017-2018 Ford Step Van Installation Guide

Step 5 - PDC & Modem Connections:

- Connect the USB cable from the modem to the PDC and secure with a zip tie (Photo A)
- Connect the Antenna cable to the modem (Photo B)
- Make these connections prior to mounting the modem & PDC
- Make sure the screw on the modem cover is secured and doesn't move or bend (Photo C)



Connect the MIMO 1 antenna wire to the Modems PRI connector



Connect the MIMO 2 antenna wire to the Modems DIV connector

PLEASE READ THE RECORDER MOUNTING & VHB TAPE INSTALLATION GUIDELINE BEFORE PROCEEDING TO THE NEXT STEP



Version 2.10.2

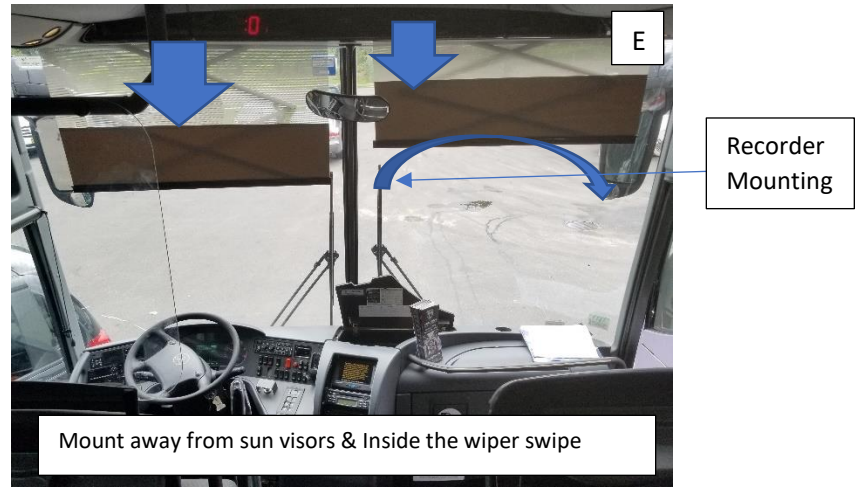
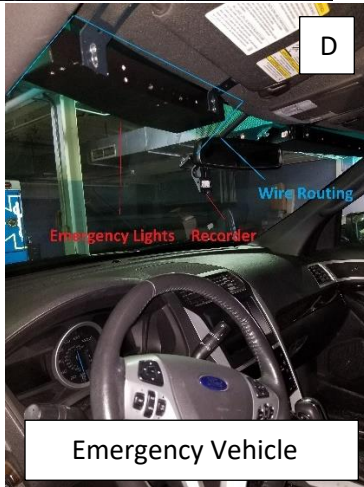
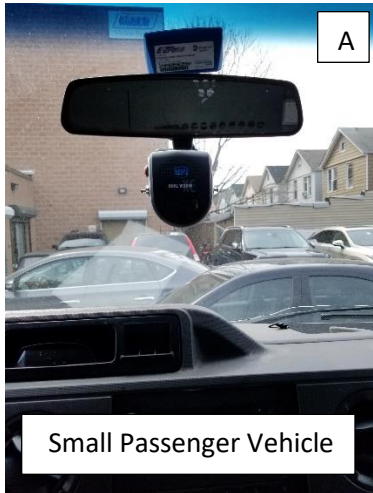
Proprietary and Confidential

2017-2018 Ford Step Van



2017-2018 Ford Step Van Installation Guide

Step 6 - Camera Mounting and wire Routing:



For small passenger vehicles, mount the Recorder under the rear-view mirror (Photo A).

If the vehicle has any factory sensors under the rear-view mirror, mount the Recorder to the right of the mirror, not causing a distraction to the driver (Photo B).

For larger trucks or busses (With split windows), mount the Recorder on the right panel (Photo C) and INSIDE the wiper swipe. Keeping the Recorder INSIDE the swipe will ensure rain or snow will not interfere with the video.

When working on emergency vehicles use extreme caution when routing wires around emergency lights and equipment (Photo D)

Always pull down the vehicles sun visors to make sure they don't block or interfere with the Recorder or the video (Photo E). Notice the swipe of the wiper blades. For vehicles like this, mount the Recorder under the visor, inside the swipe.



Version 2.10.2

Proprietary and Confidential

2017-2018 Ford Step Van



2017-2018 Ford Step Van Installation Guide

Wire Routing (Continued):

- Remove the six Philip screws on the top metal panel (Photo A)



Wiring can be routed behind the metal beam (Arrow A) and zip tied to the factory harness.

Route the cable under the dash to the PDC following factory harness routing.

Make sure to use zip ties to secure all cables

The metal in the above compartment is sharp!

When routing cables in the top compartment (Photo B) make sure the cable is protected and not cut on the metal brackets when routing

Make sure all wires are protected to prevent shorts or blown fuses



Version 2.10.2

Proprietary and Confidential

2017-2018 Ford Step Van



2017-2018 Ford Step Van Installation Guide

To verify proper angle & correct mounting, press the driver activity button. Logon to your Rosco account and view activity to confirm proper angle

The screenshot displays the Rosco Live web interface. On the left is a navigation sidebar with the Rosco Vision Systems logo and menu items: GPS TRACKING & LIVE STREAMING, EVENT CLIPS & CLOUD STORAGE, REPORTS, and FLEET ADMINISTRATION. The main content area shows the 'ROSCO VISION' header and 'ROSCO Live' branding. A browser window titled 'U150 - Live - Microsoft Edge' is open, displaying a live video feed from a vehicle. The video feed includes a timestamp '2018/08/30 08:49:27', camera status 'CH1 Q1 4FPS ROSCO', and an RSSI signal strength of '-82'. The video shows a white step van parked outdoors. Below the video is a map showing the vehicle's location. The interface also includes a search bar, a 'Sort by: A-Z' dropdown, and a list of vehicles under 'Trancasa USA', with 'U150' selected.



Version 2.10.2

Proprietary and Confidential

2017-2018 Ford Step Van