



JLG Telehandler 360 Installation Guide

This guide will show the proper way to install a 360 Camera system in a JLG Telehandler. Please review the Installation Guidelines for grounding and making connections prior to installing. In this guide you will find dash removal, wire locations, & mounting locations.

After testing and verifying power wires, disconnect the negative battery terminal to prevent any accidental shorts or blown fuses

Verify no vehicle service lights are on prior to installation. Contact a Fleet Manager immediately if the vehicle has any damage

For Technical Support please contact our support team at:

Techsupport@Roscovision.com



Gray – Caution

Red – Warning

Blue – Extra Installation Parts Needed

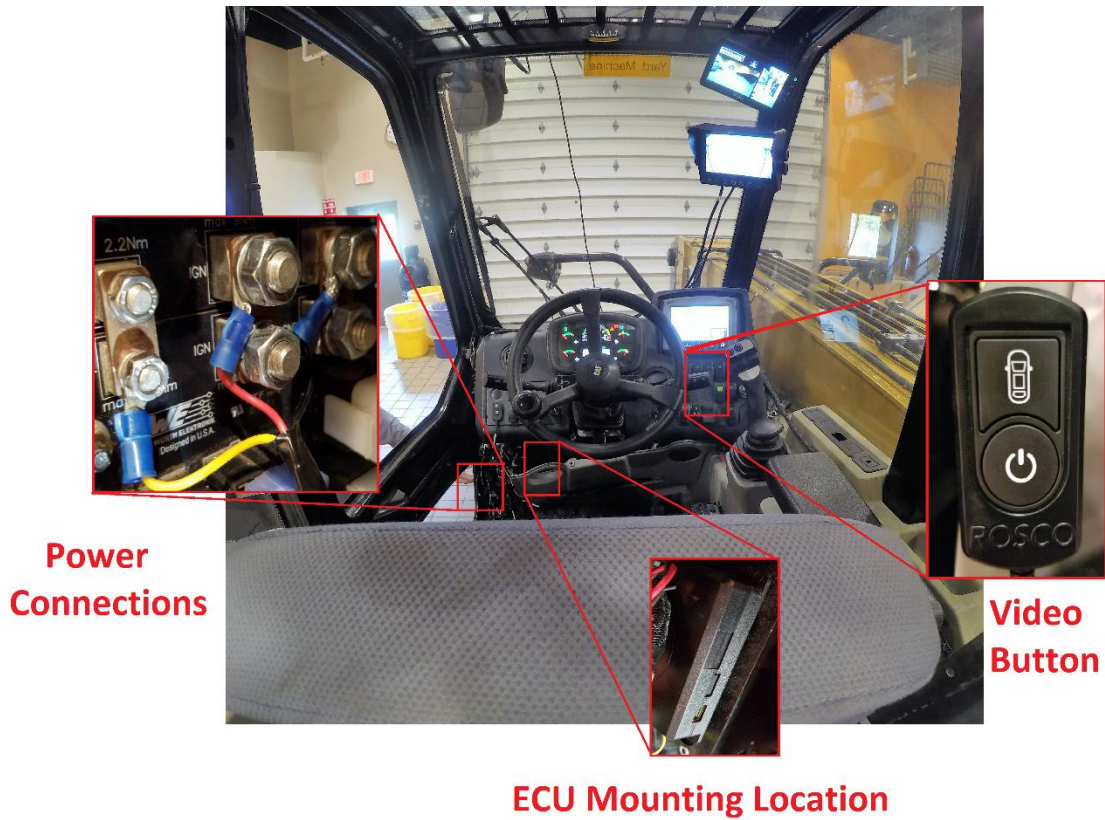
Purple – New Installation





JLG Telehandler 360 Installation Guide

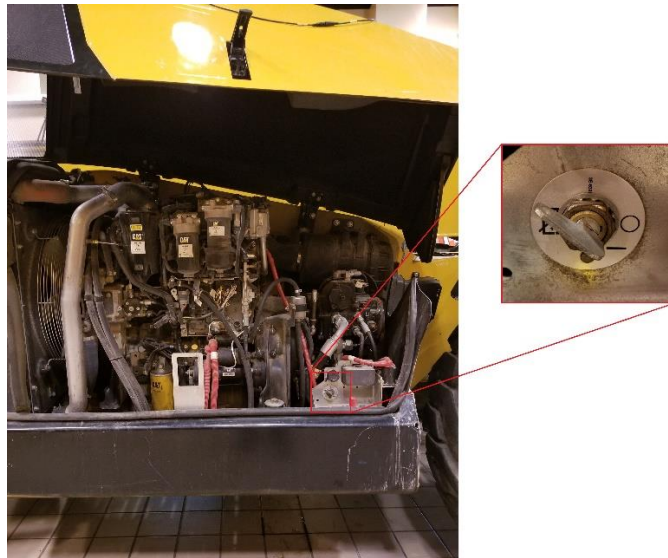
Before starting your installation please take note of component mounting locations.





JLG Telehandler 360 Installation Guide

Make sure the battery kill switch is turned off before connecting power. The switch is located under the hood of the vehicle



Step 1 - Power Connections:

- The Fuse Panel is located on the left side of the lower dash
- Using a panel tool remove the access panel
- Make your connections on the lower fuse block as shown in the photo on the next page



Constant (7MM) Ignition (13MM) Ground (13MM)

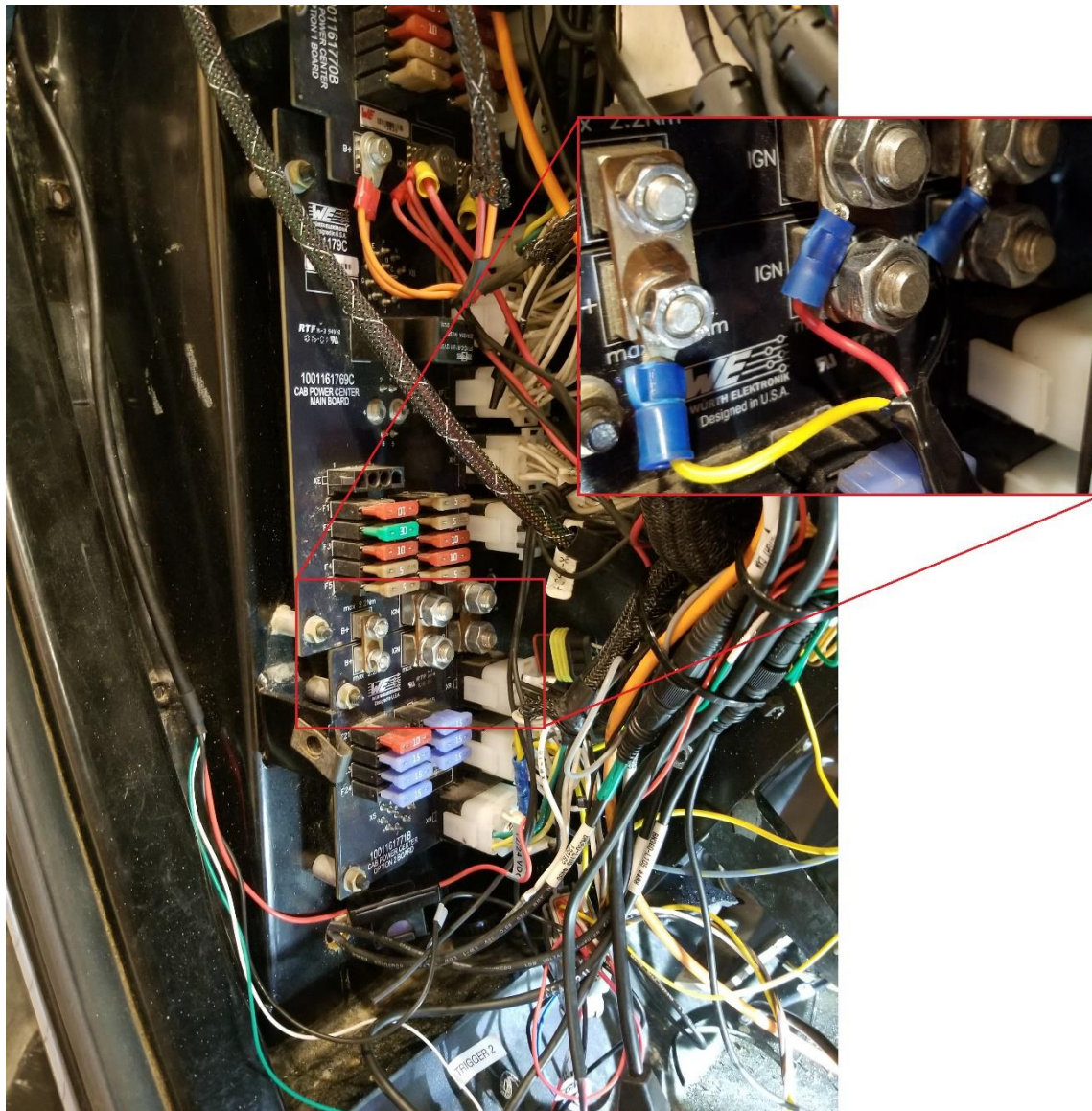




JLG Telehandler 360 Installation Guide

Power Connections (Continued):

- Crimp ring terminals to the constant, ignition, and ground wires
- Connect the YELLOW CONSTANT wire to the 1st terminal labeled B+
- Connect the RED IGNITION wire to the 2nd terminal labeled IGN
- Connect the BLACK GROUND wire to the 3rd terminal labeled GND

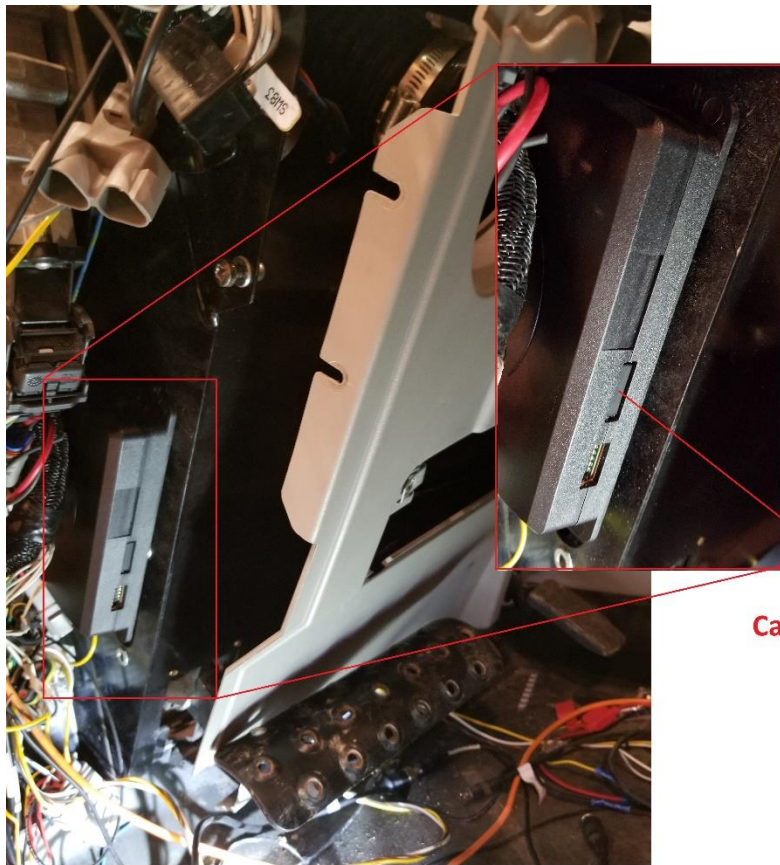




JLG Telehandler 360 Installation Guide

Step 2 - ECU MOUNTING:

- Mount the ECU on the support brace to the right of the fuse panel
- Make sure you mount the ECU with the Calibration Port facing the rear of the vehicle
- Pressure fit the ECU between the factory harness and attach to the support brace with double side tape

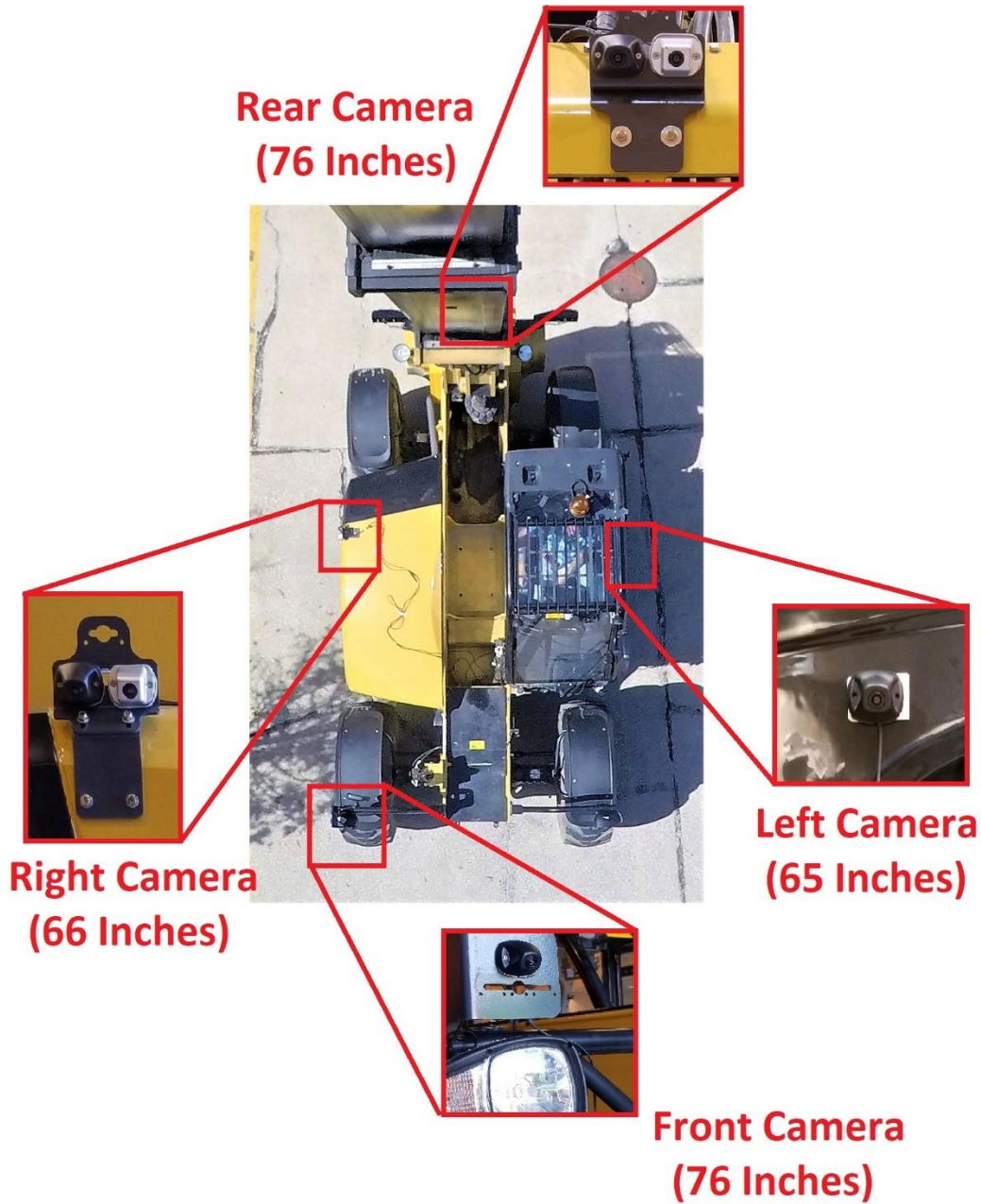


Calibration Port



JLG Telehandler 360 Installation Guide

Camera Mounting Locations:





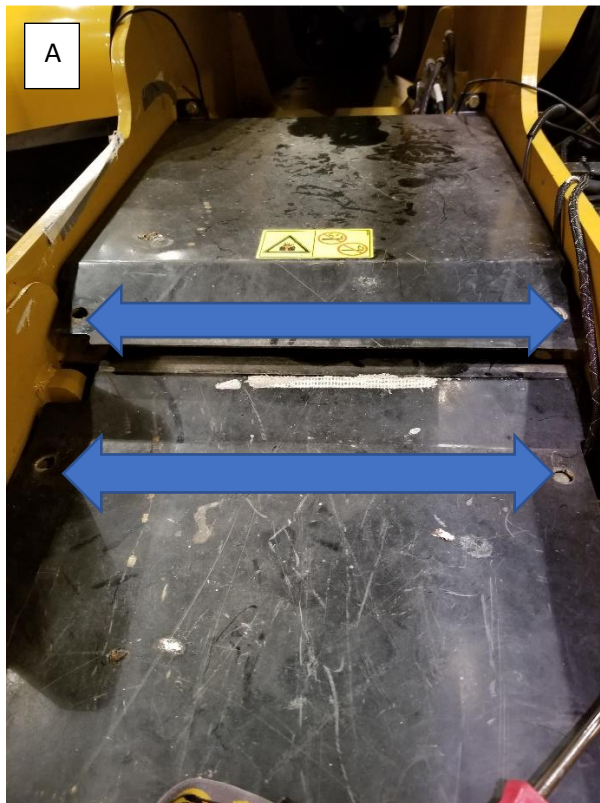
JLG Telehandler 360 Installation Guide

Use extreme caution when routing video cables. Take note of all pinch points when routing cables outside of the vehicle. Its best to lift the boom to see where all moving parts are. Always use wire loom when running wires outside.

Camera Cable Routing:

- Remove the four 13MM bolts securing the battery cover located underneath the boom (Photo A)
- On the roof of the Telehandler remove the grommet to gain access to the inside of the vehicle (Photo B)

Use silicone after all cables are routed through the grommet to prevent water leaks

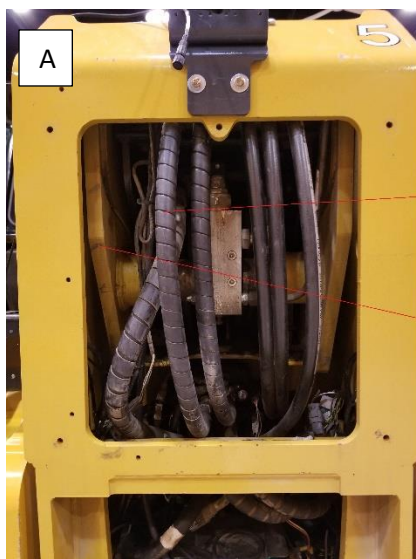




JLG Telehandler 360 Installation Guide

Rear Camera Cable Routing:

- Follow factory routed hydraulic lines when routing rear camera cables (Photo A)
- Keep cables away from all moving parts. Carefully lift the boom to find the safest route (Photo A)
- When routing into the vehicle, follow the factory harness along the side of the rear window. Make sure the cable is loomed and zip tied every few inches, and enter the vehicle through the grommet on the roof (Photo B)



Follow Factory wiring
and hydraulic lines

Keep away from moving
parts

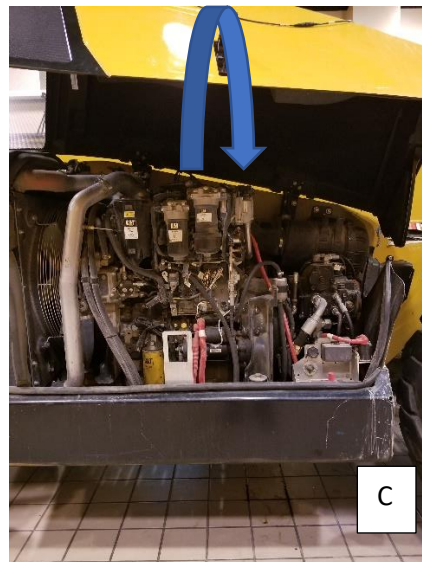
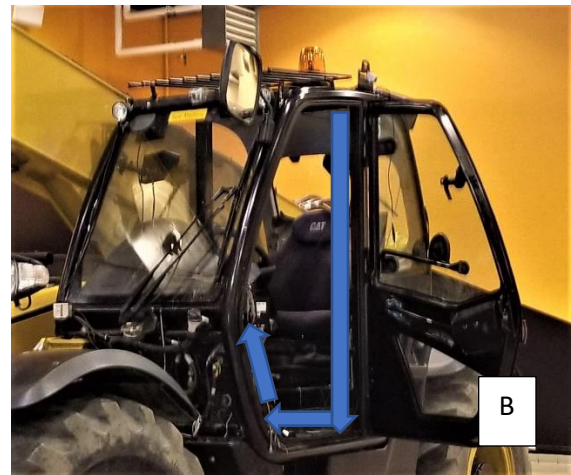
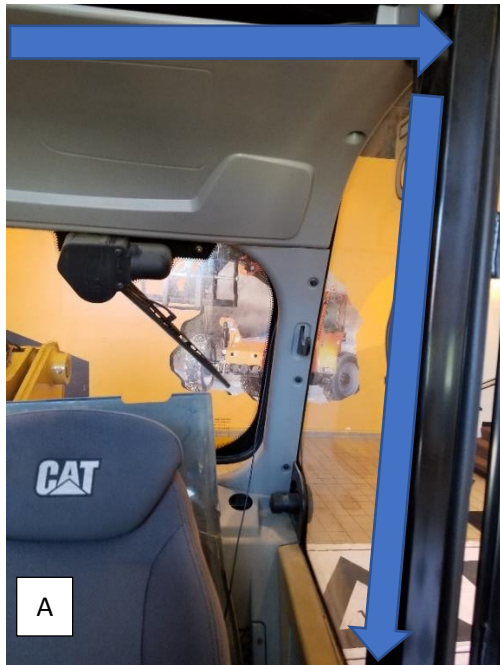




JLG Telehandler 360 Installation Guide

Left & Right Camera Cable Routing (Continued):

- With the Left camera mounted on the roof, enter the vehicle from the grommet
- Run the cables in the headliner and down the side pillar to the door sill (Photo A)
- Follow the factory harness in the sill and connect to the ECU under the dash (Photo B)
- Route the right camera under the insulation on inside of the hood (Photo C)
- Secure with wire loom and follow the same routing as the front camera inside the battery box





JLG Telehandler 360 Installation Guide

Front Camera Cable Routing:

- Route the front camera cable inside the tubing that holds the headlight (Photo A)
- After exiting the tube, follow the factory cabling inside the battery box (Photo B)
- Remove the four (4) 13MM bolts securing the battery box cover (Photo B)
- Vehicle cabling runs from the battery box to the firewall, with factory holes/Grommets to the inside of the vehicle





JLG Telehandler 360 Installation Guide

360 User view after calibration

